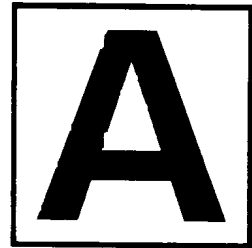


**DO NOT OPEN THIS TEST BOOKLET UNTIL YOU ARE ASKED TO DO SO**

**T.B.C. : B-GTD-O-SAB**

Test Booklet Series

Serial



**TEST BOOKLET**

**ELECTRONICS & TELECOMMUNICATION ENGINEERING  
Paper II**

*Time Allowed : Two Hours*

*Maximum Marks : 200*

**INSTRUCTIONS**

1. IMMEDIATELY AFTER THE COMMENCEMENT OF THE EXAMINATION, YOU SHOULD CHECK THAT THIS TEST BOOKLET **DOES NOT** HAVE ANY UNPRINTED OR TORN OR MISSING PAGES OR ITEMS, ETC. IF SO, GET IT REPLACED BY A COMPLETE TEST BOOKLET.
2. Please note that it is the candidate's responsibility to encode and fill in the Roll Number and Test Booklet Series Code A, B, C or D carefully and without any omission or discrepancy at the appropriate places in the OMR Answer Sheet. Any omission/discrepancy will render the Answer Sheet liable for rejection.
3. You have to enter your Roll Number on the Test Booklet in the Box provided alongside.   
**DO NOT** write *anything else* on the Test Booklet.
4. This Test Booklet contains **120** items (questions). Each item comprises four responses (answers). You will select the response which you want to mark on the Answer Sheet. In case, you feel that there is more than one correct response, mark the response which you consider the best. In any case, choose **ONLY ONE** response for each item.
5. You have to mark all your responses **ONLY** on the separate Answer Sheet provided. See directions in the Answer Sheet.
6. All items carry equal marks.
7. Before you proceed to mark in the Answer Sheet the response to various items in the Test Booklet, you have to fill in some particulars in the Answer Sheet as per instructions sent to you with your Admission Certificate.
8. After you have completed filling in all your responses on the Answer Sheet and the examination has concluded, you should hand over to the Invigilator **only the Answer Sheet**. You are permitted to take away with you the Test Booklet.
9. Sheets for rough work are appended in the Test Booklet at the end.
10. **Penalty for wrong answers :**  
**THERE WILL BE PENALTY FOR WRONG ANSWERS MARKED BY A CANDIDATE.**
  - (i) There are four alternatives for the answer to every question. For each question for which a wrong answer has been given by the candidate, **one-third (0.33)** of the marks assigned to that question will be deducted as penalty.
  - (ii) If a candidate gives more than one answer, it will be treated as a **wrong answer** even if one of the given answers happens to be correct and there will be same penalty as above to that question.
  - (iii) If a question is left blank, i.e., no answer is given by the candidate, there will be **no penalty** for that question.

**DO NOT OPEN THIS TEST BOOKLET UNTIL YOU ARE ASKED TO DO SO**

1. A transistor uses potential divider method of biasing.  $R_1 = 50 \text{ k}\Omega$ ,  $R_2 = 10 \text{ k}\Omega$  and  $R_E = 1 \text{ k}\Omega$ . If  $V_{CC} = 12 \text{ V}$  and  $V_{BE} = 0.1 \text{ V}$ , then  $I_C$  is
- 19 mA
  - 2 mA
  - 1.9 mA
  - 0.19 mA
2. Consider the following statements in the context of the conditions needed to operate a Bipolar Junction Transistor (BJT) in active region in a linear circuit :
- The emitter diode must be forward biased.
  - The collector diode must be reverse biased.
  - The voltage across the collector diode must be greater than the breakdown voltage.
  - The voltage across the collector diode must be less than the breakdown voltage.
- Which of the above statements are correct ?
- 1, 2 and 3 only
  - 1, 3 and 4 only
  - 1, 2 and 4 only
  - 1, 2, 3 and 4
3. An FET-input IC operational amplifier has an open loop differential gain of 1,00,000 and a common mode gain of 25. Then the common mode rejection ratio is
- 46 dB
  - 72 dB
  - 106 dB
  - 124 dB
4. In biasing of BJT, the slope of load line can be calculated using
- Operating base current
  - Operating collector current
  - Operating point co-ordinates
  - Minimum and maximum values of collector current
5. Leakage current approximately doubles for every  $10^\circ\text{C}$  increase in temperature of a silicon transistor. If a silicon transistor has  $I_{CEO} = 1000 \text{ nA}$  at  $30^\circ\text{C}$ , what is its leakage current at  $90^\circ\text{C}$  ?
- 32  $\mu\text{A}$
  - 64  $\mu\text{A}$
  - 16  $\mu\text{A}$
  - 128  $\mu\text{A}$
6. Which of the following statements are correct ?
- $I_{CO}$  for germanium is much greater than for silicon.
  - The steady-state temperature rise at the collector junction is proportional to the power dissipated at the junction.
  - To avoid thermal runaway the required condition is that the rate at which heat is released at the collector junction must exceed the rate at which the heat can be dissipated under steady-state conditions.
- 1, 2 and 3
  - 2 and 3 only
  - 1 and 3 only
  - 1 and 2 only

7. Upper 3 dB cut-off of common emitter amplifier depends on
- E-B junction capacitance
  - C-B junction capacitance
  - Capacitances of both junctions
  - Coupling capacitor capacitance
8. Consider the following statements in respect of an R-C coupled transistor amplifier :
- The low frequency response is determined by the transistor junction capacitors.
  - The high frequency response is limited by coupling capacitors.
  - The Miller capacitance reduces the gain at high frequencies.
  - As the gain is increased the bandwidth gets reduced.
- Which of the above statements are correct ?
- 1 and 2
  - 2 and 3
  - 3 and 4
  - 1 and 4
9. The transfer function of any stable system which has no zeros or poles in the right half of the s-plane is said to be
- Minimum phase transfer function
  - Non-minimum phase transfer function
  - Minimum frequency response function
  - Minimum gain transfer function
10. The  $\pi$ -parameters of a CE amplifier feeding a load of  $10\text{ k}\Omega$  are  $h_{ie} = 1\text{ k}\Omega$ ,  $h_{fe} = 50$ ,  $h_{re} = 0$ , and  $1/h_{oe} = 40\text{ k}\Omega$ . The voltage gain would be
- 40
  - 100
  - 400
  - 500
11. Which of the following is the principal factor that contributes to the doubling of the conversion efficiency in a transformer coupled amplifier ?
- Reducing the power dissipated in the transistor
  - Eliminating the power dissipation in the transformer
  - Elimination of dc power dissipated in the load
  - Impedance matching of the transformer
12. A power amplifier operated from 12 V battery gives an output of 2 W. The maximum collector current in the circuit is
- 166.7  $\mu\text{A}$
  - 166.7 mA
  - 136.7 A
  - 13.67 mA

13. The selectivity of tuned radio frequency (TRF) receiver is poor because

1. Q-factor requirement of tuned circuits in RF amplifier is not fixed.
2. Q required for upper side of short wave is 2000.
3. Q-factor is zero.

Which of the above statements are correct ?

- (a) 1, 2 and 3
- (b) 1 and 2 only
- (c) 1 and 3 only
- (d) 3 only

14. Consider the following statements pertaining to frequency response of RC coupled amplifier :

1. Coupling capacitance affects high frequency response.
2. Bypass capacitance affects high frequency response.
3. Coupling capacitance affects low frequency response.
4. Bypass capacitance affects low frequency response.

Which of the above statements are correct ?

- (a) 1 and 2
- (b) 3 and 4
- (c) 2 and 3
- (d) 1 and 4

15. An operational amplifier possesses

- (a) Very large input resistance and very large output resistance
- (b) Very large input resistance and very small output resistance
- (c) Very small input resistance and very small output resistance
- (d) Very small input resistance and very large output resistance

16. A power supply uses bridge rectifier with capacitor input filter. If one of the diodes is defective, then

1. The dc load voltage will be lower than its expected value.
2. Ripple frequency will be lower than its expected value.
3. The surge current will increase manifold.

Which of the above statements are correct ?

- (a) 1 and 2 only
- (b) 1 and 3 only
- (c) 2 and 3 only
- (d) 1, 2 and 3

17. In an L-section filter, a bleeder resistance is connected across the load to

- (a) Provide good regulation for all values of load
- (b) Ensure lower PIV of the diodes
- (c) Ensure lower values of capacitance in the filter
- (d) Reduce ripple content

18. A full wave rectifier uses 2 diodes. The internal resistance of each diode is  $20 \Omega$ . The transformer RMS secondary voltage from centre tap to each end of secondary is  $50 \text{ V}$  and the load resistance is  $980 \Omega$ . Mean load current will be

- (a) 45 A
- (b) 4.5 A
- (c) 45 mA
- (d) 45  $\mu\text{A}$

19. In a voltage regulator, zener diode is

1. Connected in series with filter output.
2. Forward biased.
3. Connected in parallel with filter output.
4. Reverse biased.

Which of the above are correct ?

- (a) 1 and 2
- (b) 3 and 4
- (c) 1 and 4
- (d) 2 and 3

20. For an OP-Amp phase shift oscillation, the frequency of oscillations is

- (a)  $\frac{1}{2\pi RC}$
- (b)  $\frac{1}{2\pi R^2 C^2}$
- (c)  $\frac{1}{2\pi RC\sqrt{6}}$
- (d)  $\frac{1}{2\pi RC\sqrt{3}}$

21. Consider the following statements :

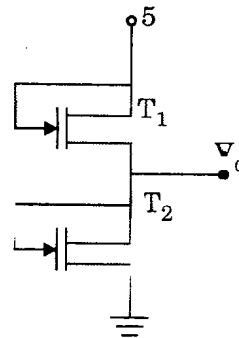
A Schottky diode is included when a transistor is fabricated so as to

1. Prevent the transistor from full saturation.
2. Eliminate saturation delay time.
3. Achieve better switching speed.
4. Reduce thermal stability.

Which of the above statements are correct ?

- (a) 1, 2 and 4 only
- (b) 1, 2 and 3 only
- (c) 2, 3 and 4 only
- (d) 1, 2, 3 and 4

22. The transistors  $T_1$  and  $T_2$  shown in the figure have a threshold voltage of 1 volt. The device parameters  $K_1$  and  $K_2$  of  $T_1$  and  $T_2$  are  $8 \mu\text{A}/\text{V}^2$  and  $9 \mu\text{A}/\text{V}^2$  respectively. The output voltage  $V_o$  is nearly



- (a) 1 V
- (b) 2 V
- (c) 3 V
- (d) 4 V

23. On simplification of expression

$Y = \overline{(A \cdot B - C)} \overline{(A + B + C)}$ , using Boolean algebra, the solution is

- (a)  $(A \cdot B + C)(A + B \cdot C)$
- (b)  $(\bar{A} + \bar{B} + \bar{C})(A + B + C)$
- (c)  $(A \cdot B + \bar{C})(A \cdot C + \bar{B})$
- (d)  $(B \cdot C + \bar{A})(A \cdot B + \bar{C})$

24. The large signal bandwidth of an operational amplifier is limited by its

- (a) CMRR
- (b) Slew rate
- (c) Gain-bandwidth product
- (d) Input impedance

25. The minimum number of gates required to realize the function  $AB + \bar{C}$  (using NAND gates only) is

- (a) 2
- (b) 3
- (c) 4
- (d) 5

26. What is the correct sequence when the logic families TTL, ECL, IIL and CMOS are arranged in descending order of fan-out capabilities?

- (a) CMOS, TTL, ECL and IIL
- (b) IIL, TTL, ECL and CMOS
- (c) IIL, ECL, TTL and CMOS
- (d) CMOS, ECL, TTL and IIL

27. K-map method of simplification can be applied when the given function is in

- (a) Product of sum form
- (b) Sum of product form
- (c) Canonical form
- (d) Any form

28. If the inverting input terminal of an operational amplifier is grounded and a sinusoidal voltage waveform is applied at the non-inverting input terminal, the output will be

- (a) Square wave
- (b) Triangular wave
- (c) Half-wave rectified sine wave
- (d) Full-wave rectified sine wave

29. The function  $Y = A + \bar{B} \cdot C$  in canonical sum of product form is

- (a)  $Y = \sum 1, 3, 5, 6, 7$
- (b)  $Y = \sum 1, 4, 5, 6, 7$
- (c)  $Y = \sum 2, 3, 5, 6$
- (d)  $Y = \sum 2, 3, 5, 7$

30. The correct instruction execution sequence is

- (a) Execute, Decode and Fetch
- (b) Fetch, Execute and Decode
- (c) Execute, Fetch and Decode
- (d) Fetch, Decode and Execute

31. A half adder can be constructed using

- (a) One XOR and one OR gate with their outputs connected in parallel
- (b) One XOR and one OR gate with their outputs connected in series
- (c) One XOR gate and one AND gate
- (d) Two XNOR gates only

32. For an SR flip-flop, S and R are made equal to 1. What is the value of Q ?

- (a) Unchanged
- (b) Clear to 0
- (c) Set to 1
- (d) Indeterminate

33. Which of the following statements are correct ?

- 1. A magnitude comparator is a sequential circuit that compares 2 numbers.
- 2. A decoder with enable input can function as a demultiplexer.
- 3. The number of AND gates in a 32-to-1 line multiplexer is 32.
- 4. The number of  $3 \times 8$  decoders required to realize a  $6 \times 64$  decoder is 8.

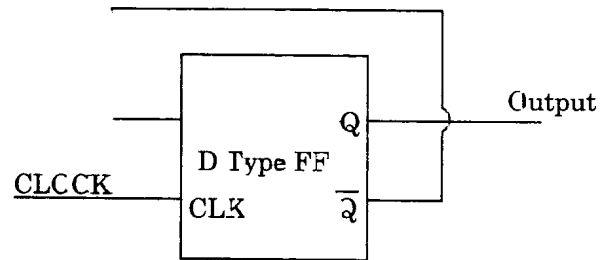
- (a) 2, 3 and 4 only
- (b) 1, 2 and 4 only
- (c) 1, 3 and 4 only
- (d) 1, 2, 3 and 4

34. The number of branches of the root loci of the equation  $s(s+4)(s+5) + K(s+2) = 0$  is

- (a) 2
- (b) 3
- (c) 4
- (d) 5

when K varies from  $-\infty$  to  $+\infty$ .

35. What is the frequency of the output Q for the circuit shown in the figure ?



- (a) Twice the input clock frequency
- (b) Half the input clock frequency
- (c) Same as the input clock frequency
- (d) Inverse of the propagation delay of the flip-flop

36. Four memory chips of  $16 \times 4$  sizes have their address buses connected together. This system will be of size

- (a)  $64 \times 4$
- (b)  $32 \times 8$
- (c)  $16 \times 16$
- (d)  $256 \times 1$

37. The time required for the step response to decrease and stay within a specified percentage of its final value is called

- (a) Delay time
- (b) Rise time
- (c) Lag time
- (d) Settling time

38. A converter type 8-bit A/D converter is driven by a 500 kHz clock. What are the maximum counts, average conversion time and maximum conversion rate respectively?
- (a) 256 counts,  $200 \times 10^{-6}$  sec and 1000 conversions/sec  
 (b) 256 counts,  $256 \times 10^{-6}$  sec and 1953 conversions/sec  
 (c) 128 counts,  $256 \times 10^{-6}$  sec and 1200 conversions/sec  
 (d) 128 counts,  $200 \times 10^{-6}$  sec and 1000 conversions/sec
39. The speed of conversion is maximum in
- (a) Successive approximation A/D converter  
 (b) Parallel comparative A/D converter  
 (c) Counter ramp A/D converter  
 (d) Dual slope A/D converter
40. In an 8-bit D/A converter, the reference voltage used is 10 V. What voltage is represented by 1010 0001?
- (a) 0.00392 V  
 (b) 6.314 V  
 (c) 6.288 V  
 (d) 5.814 V
41. When the unit impulse response of a second order system is  $\frac{1}{6} e^{-0.8t} \sin 0.6t$ , the natural frequency and damping ratio of the system are respectively
- (a) 1 rad/s and 0.8  
 (b) 0.64 rad/s and 0.8  
 (c) 1 rad/s and 1  
 (d) 0.64 rad/s and 1
42. The second-order system defined by  $\frac{25}{s^2 + 5s + 25}$  is given a step input. The time taken for the output to settle within  $\pm 2\%$  is
- (a) 1.2 s  
 (b) 2 s  
 (c) 1.6 s  
 (d) 0.4 s
43. A 4-bit modulo-6 ripple counter uses J-K flip-flops. If the propagation delay of each flip-flop is 50 ns, the maximum clock frequency that can be used is
- (a) 5 MHz  
 (b) 6.95 MHz  
 (c) 10 MHz  
 (d) 20 MHz
44. The following switching functions are to be implemented using a Decoder:
- $$f_1 = \sum m(1, 2, 4, 8, 10, 14)$$
- $$f_2 = \sum m(2, 5, 9, 11)$$
- $$f_3 = \sum m(2, 4, 5, 6, 7)$$
- The minimum configuration of the decoder should be
- (a) 2 - to - 4 lines  
 (b) 3 - to - 8 lines  
 (c) 4 - to - 16 lines  
 (d) 5 - to - 32 lines



45. Transistor is in saturation when

- (a)  $I_B = I_C$
- (b)  $I_B > \frac{I_C}{\beta_{dc}}$
- (c)  $I_E = 0$
- (d)  $I_E < \frac{I_C}{\beta_{dc}}$

46. The effects of feedback on stability and sensitivity are

- (a) Negative feedback improves stability and system response is less sensitive to external inputs and parameter variations
- (b) Feedback does not affect stability but system response is insensitive to disturbances and parameter variations
- (c) Feedback does not affect stability and system response is sensitive to disturbances and parameter variations
- (d) Negative feedback affects stability and system response is more sensitive to disturbances and parameter variations

47. Which of the following techniques are used to determine relative stability of a closed loop linear system ?

- 1. Bode plot
  - 2. Nyquist plot
  - 3. Nichol's chart
  - 4. Routh-Hurwitz criterion
- (a) 1, 2 and 4 only
  - (b) 1, 3 and 4 only
  - (c) 1, 2 and 3 only
  - (d) 1, 2, 3 and 4

48. A 4-bit D/A converter gives an output voltage of 4.5 V for an input code of 1001. The output voltage for an input code of 0110 is

- (a) 1.5 V
- (b) 2.0 V
- (c) 3.0 V
- (d) 4.5 V

49. Given that the transfer function  $G(s) = \frac{K}{s^2(1+sT)}$ , the type and order of this system are respectively

- (a) 5 and 2
- (b) 2 and 2
- (c) 2 and 3
- (d) 3 and 3

50. The feedback system with characteristic equation

$$s^4 + 20Ks^3 + 5s^2 + 10s + 15 = 0 \text{ is}$$

- (a) Stable for all values of K
- (b) Stable for positive values of K
- (c) Stable for  $7.0 < K < \infty$
- (d) Unstable for any value of K

51. The Bode plot of the transfer function  $G(s) = s$  is

- 1. Constant magnitude
- 2. 20 dB/decade
- 3. Constant phase shift angle
- 4. Constant phase shift of  $\pi/2$

Which of these are correct ?

- (a) 1 and 3
- (b) 1 and 4
- (c) 2 and 3
- (d) 2 and 4

52. The oscillation frequency of the system with the characteristic equation

$$s^6 + 2s^5 + 3s^4 + 4s^3 + 3s^2 + 2s + 1 = 0 \text{ is}$$

- (a) +1 radian/sec
- (b) -1 radian/sec
- (c) j1 radian/sec
- (d) -j1 radian/sec

53. The closed loop transfer function of a unity negative feedback system is  $\frac{100}{s^2 + 8s + 100}$ . Its open loop transfer function is

- (a)  $\frac{100}{s+8}$
- (b)  $\frac{1}{s^2+8s}$
- (c)  $\frac{100}{s^2-8s}$
- (d)  $\frac{100}{s^2+8s}$

54. The Laplace transform of  $e^{-2t} \sin 2\omega t$  is

- (a)  $\frac{2s}{(s+2)^2 + 2\omega^2}$
- (b)  $\frac{2\omega}{(s-2)^2 + 4\omega^2}$
- (c)  $\frac{2\omega}{(s+2)^2 + 4\omega^2}$
- (d)  $\frac{2s}{(s-2)^2 + 2\omega^2}$

55. In a closed loop system for which the output is the speed of a motor, the output rate control can be used to

- (a) Limit the speed of the motor
- (b) Limit the torque output of the motor
- (c) Reduce the damping of the system
- (d) Limit the acceleration of the motor

56. The roots of the characteristic equation  $1 + G(s)H(s) = 0$  are the same as the

- (a) Poles of the closed loop transfer function
- (b) Poles of the open loop transfer function
- (c) Zeros of the closed loop transfer function
- (d) Zeros of the open loop transfer function

57. In a servo-system, the device used for providing derivative feedback is known as

- (a) Synchro
- (b) Servomotor
- (c) Potentiometer
- (d) Tachogenerator

58. The transfer function of a controller is  $G_C(s) = \frac{1+3s}{1+s}$ . The maximum phase control provided by this controller is

- (a) 30° lead
- (b) 30° lag
- (c) 45° lead
- (d) 45° lag

59. Consider the following statements :

The effect of phase lead network is given as

1. Increased velocity constant.
2. Increased phase margin.
3. Increased bandwidth.
4. Slower response.

Which of the above statements are correct ?

- (a) 1, 2 and 3 only
- (b) 1, 2 and 4 only
- (c) 2, 3 and 4 only
- (d) 1, 2, 3 and 4

60. A binary channel with capacity 64 kbits/s is available for PCM voice transmission. If signal is band limited to 5 kHz, then the appropriate values of quantizing level L and the sampling frequency will be

- (a) 64 and 7.2 kHz
- (b) 32 and 10.5 kHz
- (c) 64 and 10.5 kHz
- (d) 32 and 7.2 kHz

61. Which of the following statements are correct for Bode plots ?

1. Gain margin and phase margin can be easily determined.
2. Absolute and relative stability of only minimum-phase systems can be determined.
3. Gain margin is positive and system is stable, if magnitude of  $L(j\omega)$  at phase crossover is positive.

- (a) 1, 2 and 3  
(b) 1 and 3 only  
(c) 1 and 2 only  
(d) 2 and 3 only

62. A communication channel disturbed by Gaussian noise has a bandwidth of 6 kHz and S/N ratio of 15. The maximum transmission rate that such a channel can support is

- (a) 2.4 kbits/sec  
(b) 24 kbits/sec  
(c) 32 kbits/sec  
(d) 48 kbits/sec

63. For an AM signal, the bandwidth is 20 kHz and the highest frequency component present is 800 kHz. The carrier frequency used for this AM signal is

- (a) 710 kHz  
(b) 705 kHz  
(c) 700 kHz  
(d) 790 kHz

64. The aerial current of an AM transmitter is 18 A when un-modulated, but increases to 20 A when modulated. The modulation index is

- (a) 0.68  
(b) 0.73  
(c) 0.89  
(d) 0.98

65. A carrier wave is phase modulated with frequency deviation of 20 kHz by a single tone frequency of 2 kHz. If the single tone frequency is increased to 2 kHz, assuming that phase deviation remains unchanged, bandwidth of the PM signal is

- (a) 20 kHz  
(b) 32 kHz  
(c) 22 kHz  
(d) 44 kHz

66. A sinusoidal audio signal is given by  $e_s = 15 \sin 2\pi(2000t)$ . It modulates a sinusoidal carrier wave  $e_c = 60 \sin 2\pi(10^5t)$ . The value of amplitude modulation index must be

- (a) 0.5  
(b) 4  
(c) 0.6  
(d) 0.25

67. A half duty cycle rectangular clock output is sampled at 5 times its rate. Spectrum of the sampled clock will be having mirror image in negative frequency domain of a

- (a) Sampled sinc pulse
- (b) Periodic sinc pulse
- (c) Periodic sampled sinc pulse
- (d) None of the above

68. A signal of maximum frequency of 2 MHz modulated by 4 GHz carrier is DSB/SC. If the resultant signal is sampled ideally as low pass signal, the minimum sampling frequency should be

- (a) 4 MHz
- (b) 3 MHz
- (c) 4.004 GHz
- (d) 8.008 GHz

69. If  $n_1$  and  $n_2$  are the refractive indices of the core and cladding respectively, the maximum acceptance angle at the air-core interface should be

- (a)  $\tan^{-1} \frac{n_2}{n_1}$
- (b)  $\sin^{-1} \sqrt{n_2^2 - n_1^2}$
- (c)  $\sin^{-1} \sqrt{n_1^2 - n_2^2}$
- (d)  $\tan^{-1} \frac{n_1}{n_2}$

70. Which of the following statements regarding binary counter are correct ?

1. Clock inputs of all the flip-flops of a synchronous counter are applied from the same source whereas those in an asynchronous counter are from different sources.
2. Asynchronous counter has ripple effects whereas synchronous counter has not.
3. Only J-K flip-flops can be used in synchronous counter whereas asynchronous counter can be designed with any type of flip-flops.

- (a) 1, 2 and 3
- (b) 1 and 3 only
- (c) 2 and 3 only
- (d) 1 and 2 only

71. Maximum frequency reflected from ionosphere is 9 MHz on a particular day. The maximum ion density/metre<sup>3</sup> is

- (a)  $10^8$
- (b)  $10^6$
- (c)  $10^{12}$
- (d)  $10^9$

72. The anti-aliasing filter has a higher cut-off frequency  $f_m$ . Its output is sampled periodically every  $T_S$  seconds. For proper recovery of the signal at the receiver,  $T_S$  must be

- (a)  $T_S \geq \frac{1}{(2f_m)}$
- (b)  $T_S \leq \frac{1}{(2f_m)}$
- (c)  $T_S \geq \frac{2}{f_m}$
- (d)  $T_S \leq \frac{2}{f_m}$

73. A binary channel with capacity 36 kbits/s is available for PCM voice transmission. If signal is band limited to 3.2 kHz, then the appropriate values of quantizing level  $L$  and sampling frequency will be

- (a) 64 and 7.2 kHz
- (b) 32 and 7.2 kHz
- (c) 64 and 3.6 kHz
- (d) 32 and 3.6 kHz

74. A fibre-optic cable has the indices of refraction of core of 1.6 and of cladding of 1.4. For an angle of incidence  $70^\circ$ , the angle of return light ray will be

- (a)  $35^\circ$
- (b)  $61^\circ$
- (c)  $70^\circ$
- (d)  $90^\circ$

75. In an optical communication system, having an operating wavelength  $\lambda$  in metres, only  $X\%$  of its source frequency can be used as its channel bandwidth. The system is to be used for transmitting TV signal requiring a bandwidth of  $f$  Hz. The number of channels transmitted by this system simultaneously is ( $c =$  speed of light)

- (a)  $\frac{100Xc}{\lambda f}$
- (b)  $\frac{100\lambda f}{Xc}$
- (c)  $\frac{Xc}{\lambda f}$
- (d)  $\frac{Xc}{100\lambda f}$

76. An optical fibre communication system works on a wavelength of  $1.3 \mu\text{m}$ . The number of subscribers it can feed, if a channel requires 20 kHz, is

- (a)  $2.3 \times 10^{10}$
- (b)  $1 \times 10^5$
- (c)  $1.15 \times 10^{10}$
- (d)  $10^{10}$

77. Consider the following statements regarding a common emitter amplifier. It can be converted into an oscillator by

1. Providing adequate positive feedback.
2. Phase shifting the output by  $180^\circ$  and feeding this phase-shifted output to the input.
3. Using only a series tuned circuit as a load on the amplifier.
4. Using the negative resistance device as a load on the amplifier.

Which of the above statements are correct?

- (a) 1, 2, 3 and 4
- (b) 1 and 2 only
- (c) 2 and 3 only
- (d) 3 and 4 only

78. For an angle modulated signal,  
 $x(t) = 6 \cos [2\pi \times 10^6 t + 2 \sin (8000 \pi t) + 4 \cos (8000 \pi t)]$  V.

The average power of  $x(t)$  is

- (a) 10 W
- (b) 18 W
- (c) 20 W
- (d) 28 W

79. A single tone 4 kHz message signal is sampled with 10 kHz and 6 kHz. Aliasing effect will be seen in the reconstructed signal when the signal is sampled with

- (a) 10 kHz
- (b) 6 kHz
- (c) Both 10 kHz and 6 kHz
- (d) Neither 10 kHz nor 6 kHz

80. A source produces 26 symbols with equal probabilities. What is the average information produced by the source ?

- (a) Less than 4 bits/symbol
- (b) 6 bits/symbol
- (c) 7 bits/symbol
- (d) Between 4 bits/symbol and 6 bits/symbol

81. In order to improve the system response transient behaviour, the type of controller used is

- (a) Phase lead controller
- (b) Phase lag controller
- (c) PI controller
- (d) P controller

82. The built-in potential (diffusion potential) in a p-n junction

1. is equal to the difference in the Fermi-level of the two sides, expressed in volts.
2. increases with the increase in the doping levels of the two sides.
3. increases with the increase in temperature.
4. is equal to the average of the Fermi-levels of the two sides.

Which of the above statements are correct ?

- (a) 1 and 2 only
- (b) 1 and 3 only
- (c) 1, 2 and 3
- (d) 2, 3 and 4

83. Consider the following statements for TEM (Transverse Electro Magnetic) waves :

1. Only for TEM wave, could the conductor separation be small compared with a wavelength.
2. TEM mode needs to be considered at low frequencies.
3. TEM waves are usually not obeying Maxwell's equations.
4. TEM waves are usually treated like 'ordinary transmission line signals'.

Which of the above statements are correct ?

- (a) 1, 2 and 3 only
- (b) 1 and 2 only
- (c) 2, 3 and 4 only
- (d) 1, 2, 3 and 4

84. An analog signal is sampled at 36 kHz and quantized into 256 levels. The time duration of a bit of the binary coded signal is

- (a) 7.43  $\mu$ s
- (b) 6.43  $\mu$ s
- (c) 3.47  $\mu$ s
- (d) 1.47  $\mu$ s

85. The ratio  $\frac{\sigma}{\omega \epsilon}$  is

1. Intrinsic ratio
2. Loss tangent
3. Conduction ratio
4. Dissipation factor

Which of these are correct ?

- (a) 1 and 2
- (b) 1 and 4
- (c) 2 and 3
- (d) 2 and 4

86. A transmitting antenna with a 300 MHz carrier frequency produces 2 kW of power. If both transmitting and receiving antennas have unity power gain, the power received by the receiving antenna at a distance of 1 km is

- (a) 11.8 mW
- (b) 13.4 mW
- (c) 18.4  $\mu$ W
- (d) 12.7  $\mu$ W

87. If the diameter of a  $\frac{\lambda}{2}$  dipole antenna is increased from  $\frac{\lambda}{100}$  to  $\frac{\lambda}{50}$  then its

- (a) Bandwidth increases
- (b) Bandwidth decreases
- (c) Gain increases
- (d) Gain decreases

88. The ideal gain of a parabolic antenna of diameter 10 m for a wavelength of 316 cm is

- (a) 20 dB
- (b) 30 dB
- (c) 40 dB
- (d) 60 dB

89. An antenna consists of 4 identical Hertzian dipoles uniformly located along the z-axis and polarized in z-direction. The spacing between the dipoles is  $\frac{\lambda}{4}$ . The group pattern function is

- (a)  $4 \cos\left(\frac{\pi}{4} \cos \epsilon\right) \cos\left(\frac{\pi}{2} \cos \theta\right)$
- (b)  $4 \cos\left(\frac{\pi}{4} \cos \epsilon\right) \cos\left(\frac{\pi}{8} \cos \theta\right)$
- (c)  $4 \cos\left(\frac{\pi}{4} \cos \theta\right) \sin\left(\frac{\pi}{2} \cos \epsilon\right)$
- (d)  $4 \cos\left(\frac{\pi}{4} \cos \theta\right) \sin\left(\frac{\pi}{8} \cos \theta\right)$

90. Current required to radiate 100 W of power at 100 MHz from 0.01 m dipole will be
- 131 A
  - 141 A
  - 151 A
  - 161 A
91. The length of half-wave dipole at 30 MHz will be
- 5 m.
  - 10 m
  - 15 m
  - 5.5 m
92. Microwave impedance measurement is carried out by
- Slotted line method, Reactive discontinuity and Reflectometer
  - Wave meter method, Slotted line method and Down conversion method
  - Slotted line method, CW measurement and Swept frequency measurement
  - None of the above
93. A modulated signal is given by
- $$s(t) = e^{-at} \cos [(\omega_c + \Delta\omega)t] u(t).$$
- The complex envelop of  $s(t)$  is
- $e^{-at} e^{[j(\omega_c + \Delta\omega)t]} u(t)$
  - $e^{-at} e^{[j\Delta\omega t]} u(t)$
  - $e^{[j\Delta\omega t]} u(t)$
  - $e^{[j(\omega_c + \Delta\omega)t]} u(t)$
- where,  $a$ ,  $\omega_c$  and  $\Delta\omega$  are positive constants and  $\omega_c \gg \Delta\omega$ .
94. The frequency range for satellite communication is
- 1 kHz – 100 kHz
  - 100 kHz – 1 MHz
  - 10 MHz – 30 MHz
  - 1 GHz – 30 GHz
95. A parabolic dish antenna of 1 m diameter and efficiency of 70%, operating at 20 GHz, will have a gain of nearly
- 20 dB
  - 25 dB
  - 30 dB
  - 40 dB
96. The decimal equivalent of Binary 110.001 is
- 6.25
  - 6.125
  - 6.25
  - 6.612
97. Given  $(125)_R = (2C3)_5$ . The value of radix R will be
- 16
  - 10
  - 3
  - 3



98. The 2's complement of  $(25\ 639)_{10}$  is

- (a) 74360
- (b) 06732
- (c) 3732
- (d) 7436

99. Consider the following statements :

1. When two unsigned numbers are added, an overflow is detected from the carry into the most significant position.
2. An overflow does not occur if the two numbers added are both negative.
3. If the carry into the sign bit position and carry out of the sign bit position are not equal, an overflow condition is produced.

Which of the above statements is/are correct ?

- (a) 1, 2 and 3
- (b) 1 only
- (c) 2 only
- (d) 3 only

100. The statement label in a subroutine

- (a) May be the same as in the main program
- (b) Is always the same as in the main program
- (c) Cannot be the same as in the main program
- (d) Cannot be used

101. Techniques that automatically move program and data blocks into the physical main memory when they are required for execution are called

- (a) Main memory techniques
- (b) Virtual memory techniques
- (c) Cache memory techniques
- (d) Associate mapping techniques

102. Minimum sampling frequency required to reconstruct

$$y(t) = 0.5 \left[ \frac{\sin 2\pi 1000t}{\pi t} \right]^3 + 0.7 \left[ \frac{\sin 2\pi 100t}{\pi t} \right]^2$$

is

- (a)  $1 \times 10^3$  Hz
- (b)  $2 \times 10^3$  Hz
- (c)  $4 \times 10^3$  Hz
- (d)  $6 \times 10^3$  Hz

103. In a microprocessor, WAIT states are used to

- (a) Make the processor WAIT during a DMA operation
- (b) Make the processor WAIT during an interrupt processing
- (c) Make the processor WAIT during a power shut down
- (d) Interface SLOW peripheral to the processor

104. A register of microprocessor which keeps track of the execution of a program and which contains the memory address of the next instruction to be executed is called

- (a) Index register
- (b) Memory address register
- (c) Program counter
- (d) Instruction register

105. Which of the following statements are correct ?

1. DRAM offers reduced power consumption.
2. An associative memory is cheaper than RAM.
3. The fastest and most flexible cache organization uses content addressable memory.
4. The address generated by a segmented program is called a physical address.

- (a) 1 and 3
- (b) 1 and 4
- (c) 2 and 3
- (d) 2 and 4

106. What is the activity of the microprocessor 8086/8088 when the signals  $\overline{SS}_0$ ,  $\overline{DT}/\overline{E}$  and  $\overline{IO}/\overline{M}$  are 1, 0 and 1 respectively in minimum mode ?

- (a) Read memory
- (b) Read I/O port
- (c) Code Access
- (d) Write I/O port

107. OS that permits multiple programs to be run simultaneously using a single processor is referred to as

- (a) Multitasking
- (b) Multithreading
- (c) Multi-user
- (d) Multi-processing

108. In mode 0, Interrupt on terminal count of 8253, if the gate pin is made low while counter is decrementing, which one of the following operations will follow ?

- (a) Counter stops and cleared to '0' and starts decrementing when gate pin is made high
- (b) Counter stops and thereafter it increments till gate pin = '1' high
- (c) Counter stops, the current contents are held and the decrement operation resumes only after gate pin is made high
- (d) Counter stops, the current contents are held for one clock cycle and the decrement operation resumes

109. With respect to the default IR7 routine in 8259 PIC, which of the following statements are correct ?

1. Default CALL to the IR7 routine when an invalid interrupt occurs at IR pin.
2. A default IR7 CALL does not set the corresponding ISR bit.
3. A default IR7 routine is nothing but the same valid IR7 routine with lowest priority.

- (a) 1, 2 and 3
- (b) 1 and 2 only
- (c) 1 and 3 only
- (d) 2 and 3 only

110. In a microprocessor system with memory mapped I/O

- (a) Devices have 8-bit addresses
- (b) Devices are accessed using IN and OUT instructions
- (c) There can be a maximum of 256 input devices and 256 output devices
- (d) Arithmetic and logic operations can be directly performed with the I/O data

111. In a microprocessor when a CPU is interrupted, it

- (a) Stops execution of instructions
- (b) Acknowledges interrupt and branches of subroutine
- (c) Acknowledges interrupt and continues
- (d) Acknowledges interrupt and waits for the next instruction from the interrupting device

112. Consider the following statements :

The advantage of cycle stealing in DMA is that

1. It increases the maximum I/O transfer rate.
2. It reduces the interference by the DMA controller in the CPU's memory access.
3. It is beneficially employed for I/O device with shorter bursts of data transfer.

Which of the above statements are correct ?

- (a) 1 and 2 only
- (b) 1 and 3 only
- (c) 2 and 3 only
- (d) 1, 2 and 3

113. D input of a clocked D-flip-flop receives an input  $A \oplus Q_n$  where A is an external logic input and  $Q_n$  is the output of the  $n^{\text{th}}$  D-FF before the clock appears. The circuit works as

- (a) EX-OR gate
- (b) T-FF
- (c) D-FF
- (d) JK-FF

114. Which one of the following is the correct answer when  $1101_2$  is subtracted from  $11101_2$  by using the 1's complement method ?

- (a) 0100<sub>2</sub>
- (b) 1000<sub>2</sub>
- (c) 0001<sub>2</sub>
- (d) 0001<sub>0</sub>

115. An Excess-3 code arithmetic operation is used to perform the

- (a) Binary addition
- (b) Binary subtraction
- (c) BCD addition
- (d) BCD subtraction

116. Convert the decimal 41.6875 into octal.

- (a) 51.54
- (b) 51.13
- (c) 54.13
- (d) 51.51

117. If the variance  $\sigma_x^2$  of  $d(n) = X(n) - X(n - 1)$  is one-tenth the variance  $\sigma_x^2$  of a stationary zero-mean discrete-time signal  $X(n)$ , then the normalized autocorrelation function  $R_{XY}(K/\sigma_x^2)$  at  $K = 1$  is

- (a) 0.95
- (b) 0.90
- (c) 0.10
- (d) 0.05

**Directions :** Each of the next **three (03)** items consists of two statements, one labelled as the 'Statement (I)' and the other as 'Statement (II)'. Examine these two statements carefully and select the answers to these items using the codes given below :

**Codes :**

- (a) Both Statement (I) and Statement (II) are individually true and Statement (II) is the correct explanation of Statement (I)
- (b) Both Statement (I) and Statement (II) are individually true but Statement (II) is *not* the correct explanation of Statement (I)
- (c) Statement (I) is true but Statement (II) is false
- (d) Statement (I) is false but Statement (II) is true

118. *Statement (I) :*

A differential amplifier is used at the input stage of an operational amplifier.

*Statement (II) :*

Differential amplifiers have very high CMRR.

119. *Statement (I) :*

Lead compensation is used to improve system stability margins.

*Statement (II) :*

Lead compensation achieves the desired result through the merits of its phase lead contribution.

120. *Statement (I) :*

The bandwidth of AM signal depends on the bandwidth of the modulating signal.

*Statement (II) :*

The amplitude-modulated signal contains  $f_c$ ,  $f_c \pm f_m$  frequency signals

**SPACE FOR ROUGH WORK**

**SPACE FOR ROUGH WORK**

**SPACE FOR ROUGH WORK**

**SPACE FOR ROUGH WORK**