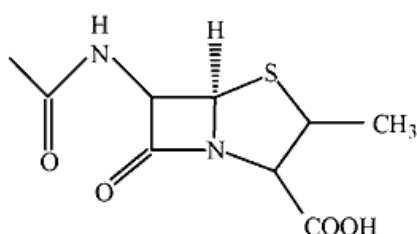


GPAT QUESTION PAPER 2010 WITH ANSWER KEY

GPAT QUESTIONS

- The vitamin essential in tissue culture medium is
 - Pyridoxine
 - Thiamine
 - Nicotinic acid
 - Inositol
- Gingko biloba is used for its
 - Expectorant activity
 - Lipid lowering activity
 - PAF antagonistic activity
 - Antidepressant activity
- The amount of barbaloin present in Aloe vera is
 - <1%
 - 3.5-4%
 - 1-1.5%
 - 2-2.5%
- Sildenafil is used for treatment of one of the following Disorders:
 - Systolic hypertension
 - Unstable angina
 - Pulmonary hypertension
 - Hypertension due to eclampsia
- Cardiac glycosides have the following configuration in the aglycone part of the steroid nucleus
 - 5 α , 14 α -
 - 5 α , 14 β -
 - 5 β , 14 α
 - 5 β , 14 β -
- Quassia wood is adulterated with
 - Brucea antidysenterica*
 - Cassia angustifolia*
 - Cinnamomum zeylanicum*
 - Cephaelis ipecacuanaha*
- Eugenol is present in
 - Fennel
 - Tuki
 - Cardamom
 - Coriander
- Which one of the following drugs is prescribed for the treatment of Philadelphia chromosome positive patients with chronic myeloid Leukemia?
 - Pentostatin
 - Methotrexate
 - Imatinib
 - L-Asparaginase
- Which of the following monoclonal antibodies is prescribed for patients with nonHodgkin's Lymphoma
 - Infliximab
 - Abciximab
 - Gemtuzumab
 - Rituximab
- Identify the drug which is **NOT** used in the treatment of malaria caused by *Plasmodium falciparum*:
 - Artemisinin
 - Primaquine
 - Quinine
 - Mefloquine
- Which one of the following drugs does **NOT** act through G-Protein coupled receptors
 - Epinephrine
 - Insulin
 - Dopamine
 - TSH
- Which one of the following drugs is most effective in preventing transmission of HIV virus from the mother to the foetus
 - Lamivudine
 - Zidovudine
 - Indinavir
 - Ribavirin
- Improvement of memory in Alzheimer's disease is brought about by drugs which increase transmission in
 - Cholinergic receptors
 - Dopaminergic receptors
 - GABAergic receptors
 - Adrenergic receptors

14. Which of the following non-opioid analgesic is a prodrug
 (a) Piroxicam (b) Celecoxib (c) Nabumetone (d) Ketorolac
15. Which one of the following drugs is **NOT** a typical anti-psychotic agent
 (a) Chlorpromazine (b) Haloperidol (c) Risperidone (d) Flupentixol
16. Which one of the followings is a plasminogen activator
 (a) Tranexamic acid (b) Streptokinase (c) Aminocaproic acid (d) None
17. Myasthenia gravis is diagnosed with improved neuromuscular function by using
 (a) Donepezil (b) Edrophonium (c) Atropine (d) Pancuronium
18. Which one of the following drugs specifically inhibits calcineurin in the activated T-Lymphocytes
 (a) Daclizumab (b) Prednisone (c) Sirolimus (d) Tacrolimus
19. The chemical behaviour of morphine alkaloid is
 (a) Acidic (b) Basic (c) Neutral (d) Amphoteric
20. At physiological pH the following compound would be MOSTLY in the



- (a) Cationic form (b) Unionized form
 (c) Zwitterionic form (d) Anionic form
21. Which one of the followings is used as a mood stabilizer for bipolar disorder and also in certain epileptic convulsions?
 (a) Phenytoin (b) Lithium (c) Sodium valproate (d) Fluoxetine
22. An isosteric replacement for carboxylic acid group is
 (a) Pyrrole (b) Isoxazole (c) Phenol (d) Tetrazole
23. The given antibiotic is an example of ansamycins
 (a) Roxythromycin (b) Adriamycin (c) Aureomycin (d) Rifamycin
24. For glyburide, all of the following metabolic reactions are logical EXCEPT
 (a) O-demethylation (b) Aromatic oxidation
 (c) Benzylic hydroxylation (d) Amide hydrolysis
25. The effects observed following systemic administration of levodopa in the treatment of Parkinsonism has been attributed to its catabolism to dopamine. Carbidopa, can markedly increase the proportion of levodopa that crosses the bloodbrain barrier by
 (a) Increasing penetration of levodopa through BBB by complexation with it
 (b) Decreasing peripheral metabolism of levodopa
 (c) Decreasing metabolism of levodopa in the CNS
 (d) Decreasing clearance of levodopa from the CNS

36. Bloom strength is used to check the quality of
- (a) Lactose (b) Ampoules
(c) Hardness of tablets (d) Gelatin
37. The characteristic of non-linear pharmacokinetics include
- (a) Area under the curve is proportional to the dose
(b) Elimination half-life remains constant,
(c) Area under the curve is not proportional to the dose
(d) Amount of drug excreted through remains constant
38. In the Drugs and Cosmetics Act and Rules, the Schedule relating to GMP is
- (a) Schedule M (b) Schedule C (c) Schedule Y (d) Schedule H
39. Thioglycolic acid-like compounds have applications in following type of cosmetic formulations
- (a) Depilatory preparations (b) Epilatory preparations
(c) Vanishing creams (d) Skin tan preparations
40. Which one of the following is a flocculating agent for a negatively charged drug
- (a) Aluminium chloride (b) Bentonite
(c) Tragacanth (d) Sodium biphosphate
41. The healing agent used in hand creams is
- (a) Soft paraffin (b) Urea (c) Bees wax (d) Stearyl alcohol
42. Measurement of inulin renal clearance is a measure for
- (a) Effective renal blood flow (b) Renal drug excretion rate
(c) Active renal secretion (d) Glomerular filtration rate
43. Highly branched three dimensional macromolecules with controlled structures with all bonds originating from a central core are known as
- (a) Cyclodextrins (b) Dextrans (c) Dendrimers (d) Liposomes
44. Which one of the following is the commonly used bulking agent in the formulation of freeze dried low dose drug products?
- (a) Sodium chloride (b) Mannitol (c) Starch (d) HPMC
45. The applicability of Noyes-Whitney equation is to describe
- (a) First order kinetics (b) Zero order kinetics
(c) Mixed order kinetics (d) Dissolution rate
46. Which filler can **NOT** be used for the preparation of tablets for amine containing basic drugs to avoid discoloration of the tablets?
- (a) Dicalcium phosphate (b) Microcrystalline cellulose
(c) Starch (d) Lactose
47. The ability of human eye using illuminated area to detect a particle is limited to
- (a) 0.4 micron (b) 25 micron (c) 50 micron (d) 10 microns

48. What quantities of 95 % v/v and 45 % v/v alcohols are to be mixed to make 800 mL of 65 % v/v alcohol?
- (a) 480 mL of 95 % and 320 mL of 45 % alcohol
 (b) 320 mL of 95 % and 480 mL of 45 % alcohol
 (c) 440 mL of 95 % and 360 mL of 45 % alcohol
 (d) 360 mL of 95 % and 440 mL of 45 % alcohol
49. The role of borax in cold creams is
- (a) Anti-microbial agent (b) To provide fine particles to polish skin
 (c) *In-situ* emulsifier (d) Antioxidant
50. Choose the right combination
- (a) Quinine, antimalarial, isoquinoline alkaloid
 (b) Reserpine, antihypertensive, indole alkaloid
 (c) Quantitative microscopy, stomatal number, myrrh
 (d) Palmitic acid, salicylic acid, fatty acids
51. Triterpenoids are active constituents of
- (a) Jaborandi (b) Rhubarb (c) Stramonium (d) Brahmi
52. Alkaloids are **NOT** precipitated by
- (a) Mayer's reagent (b) Dragendorff Reagent
 (c) Picric acid (d) Millon's reagent
53. Anisocytic stomata are present in
- (a) Senna (b) Digitalis (c) Belladonna (d) Coca
54. *Bacopa monnieri* plant belongs to the family
- (a) Scrophulariaceae (b) Leguminosae
 (c) Polygalaceae (d) Rubiaceae
55. Tropane alkaloids are **NOT** present in
- (a) *Datura stramonium* (b) *Erythroxylum coca*
 (c) *Duboisia myoporoides* (d) *Lobelia inflata*
56. Guggul lipids are obtained from
- (a) *Commiphora molmol* (b) *Boswellia serrata*
 (c) *Commiphora wightii* (d) *Commiphora abyssinica*
57. An example of N-glycoside is
- (a) Adenosine (b) Sinigrin (c) Rhein-8-glucoside (d) Aloin
58. One mg of *Lycopodium* spores used in quantitative microscopy contains an average of
- (a) 94,000 spores (b) 92,000 spores
 (c) 90,000 spores (d) 91,000 spores
59. Select the correct combination of drugs for the treatment of patients suffering from Hepatitis C
- (a) Interferon with Ribavirin (b) Interferon with Zidovudine
 (c) Interferon with Stavudine (d) Interferon with Lamivudine

60. **ALISKIREN** acts by
- Inhibiting the conversion of Angiotensin I to II
 - Inhibiting the release of rennin
 - Inhibiting the binding of Angiotensin II to the receptor
 - Inhibiting the action of aldosterone
61. **Digitalis toxicity is enhanced by co-administration of**
- Potassium
 - Quinidine
 - Diuretics
 - Antacids
62. **The rate limiting step in cholesterol biosynthesis is one of the followings:**
- LDL-receptor concentration
 - VLDL secretion
 - Mevalonic acid formation
 - Co-enzyme A formation
63. **Which one of the following drugs is withdrawn from the market due to *torsade de pointes***
- Chlorpromazine
 - Astemizole
 - Haloperidol
 - Domperidone
64. **Ganciclovir is mainly used for the treatment of infection caused by**
- Cytomegalovirus
 - Candida albicans
 - Herpes zoster virus
 - Hepatitis B virus
65. **Identify the one rational combination which has clinical benefit:**
- Norfloxacin – Metronidazole
 - Alprazolam - Paracetamol
 - Cisapride – Omeprazole
 - Amoxicillin - Clavulanic acid
66. **Stevens Johnson syndrome is the most common adverse effect associated with one of the following category of drugs**
- Sulphonamides
 - Macrolides
 - Penicillins
 - Tetracyclines
67. **Amitriptyline is synthesized from the following starting material**
- Phthalic anhydride
 - Terephthalic acid
 - Phthalamic acid
 - Phthalimide
68. **The common structural feature amongst the three categories of anti-convulsant drugs Barbiturates, succinimides and hydantoins is**
- Ureide
 - Imidazolidinone
 - Dihydropyrimidine
 - Tetrahydropyrimidine
69. **Nicotinic action of acetylcholine is blocked by the drug**
- Atropine
 - Carvedilol
 - Neostigmine
 - d-Tubocurarine
70. **Chemical nomenclature of procaine is**
- 2-Diethylaminoethyl 4-aminobenzoate
 - N,N-Diethyl 4-aminobenzoate
 - 4-Aminobenzamidoethyl amine
 - 4-Amino-2-diethylaminoethyl benzoate

71. Barbiturates with substitution at the following position possess acceptable hypnotic activity:
- | | |
|------------------------|------------------------|
| (a) 1,3-Disubstitution | (b) 5,5-Disubstitution |
| (c) 1,5-Disubstitution | (d) 3,3-Disubstitution |
72. Selective serotonin reuptake inhibitor is
- | | |
|----------------|-----------------|
| (a) Imipramine | (b) Iproniazide |
| (c) Fluoxetine | (d) Naphazoline |
73. Proton pump inhibitors like omeprazole and lansoprazole contain the following ring system:
- | | |
|-------------------|-------------------|
| (a) Pyrimidine | (b) Benzimidazole |
| (c) Benzothiazole | (d) Oxindole |
74. A metabolite obtained from *Aspergillus terreus* that can bind very tightly to HMG CoA reductase enzyme is
- | | |
|-----------------|------------------|
| (a) Fluvastatin | (b) Cerivastatin |
| (c) Lovastatin | (d) Somatostatin |
75. Cyclophosphamide as anticancer agent acts as
- | | |
|--|---------------------------------------|
| (a) Alkylating agent before metabolism | (b) Alkylating agent after metabolism |
| (c) Phosphorylating agent after metabolism | (d) DNA intercalating agent |
76. Artemisinin contains the following group in its structure
- | | |
|---------------------|-----------------------|
| (a) An endoperoxide | (b) An exoperoxide |
| (c) An epoxide | (d) An acid hydrazide |
77. Indicate the HPLC detector that is most sensitive to change in temperature
- | | |
|------------------------------|-------------------------------|
| (a) PDA detector | (b) Refractive Index detector |
| (c) Electrochemical detector | (d) Fluorescence detector |
78. One of the following statements is NOT true
- | |
|---|
| (a) Accuracy expresses the correctness of measurement |
| (b) Precision represents reproducibility of measurement |
| (c) High degree of precision implies high degree of accuracy also |
| (d) High degree of accuracy implies high degree of precision also |
79. In thiazides following substituent is essential for diuretic activity
- | | |
|------------------------------------|-------------------------------------|
| (a) Chloro group at position 6 | (b) Methyl group at position 2 |
| (c) Sulphamoyl group at position 7 | (d) Hydrophobic group at position 3 |
80. Streptomycin can NOT be given orally for treatment of tuberculosis because
- | | |
|---|-------------------------------------|
| (a) It gets degraded in the GIT | (b) it causes severe diarrhoea |
| (c) It causes metallic taste in the mouth | (d) it is not absorbed from the GIT |
81. In organic molecules, fluorescence seldom results from absorption of UV radiation of wavelengths lower than
- | | | | |
|------------|------------|------------|------------|
| (a) 350 nm | (b) 200 nm | (c) 300 nm | (d) 250 nm |
|------------|------------|------------|------------|
82. Glass transition temperature is detected through
- | | |
|---------------------------------------|--------------------------------|
| (a) X-Ray diffractometry | (b) Solution calorimetry |
| (c) Differential scanning calorimetry | (d) Thermogravimetric analysis |

83. In Gas-Liquid Chromatography, some of the samples need to be derivatized in order to increase their
- (a) Volatility (b) Solubility
(c) Thermal conductivity (d) Polarizability
84. Oxidative phosphorylation involves
- (a) Electron transport system
(b) Substrate level phosphorylation
(c) Reaction catalyzed by succinic thiokinase in TCA cycle
(d) None of the above
85. Coulter counter is used in determination of
- (a) Particle surface area (b) Particle size
(c) Particle volume (d) All of the above
86. Drugs following one compartment open model pharmacokinetics eliminate
- (a) Bi-exponentially (b) Tri-exponentially
(c) Non-exponentially (d) Mono-exponentially
87. The temperature condition for storage of drug products under cold temperature is given As:
- (a) Temperature between 8°C and 25°C (b) temperature below 20°C
(c) Temperature at 0°C (d) temperature between 2°C and 8°C
88. Many xenobiotics are oxidized by cytochrome P450 in order to
- (a) Increase their biological activity
(b) Increase their disposition in lipophilic compartments of the body
(c) Increase their aqueous solubility <http://www.xamstudy.com>
(d) All of the above
89. The following protein/polypeptide has a quaternary structure
- (a) cc-Chymotrypsin (b) Hemoglobin
(c) Insulin (d) Myoglobin
90. Drugs in suspensions and semi-solid formulations always degrade by
- (a) First order kinetics (b) Second order kinetics
(c) Zero order kinetics (d) Non-linear kinetics
91. In nail polish, following polymer is used as a film-former
- (a) Nitrocellulose (b) Polylactic acid
(c) Hydroxypropyl methylcellulose (d) Cellulose acetate phthalate
92. Rabies vaccine (living) is prepared using
- (a) Sheep blood (b) Mice lymph
(c) Horse plasma (d) Fertile eggs
93. A drug (200 mg dose) administered in tablet form and as intravenous injection (50 mg dose) showed AUG of 100 and 200 microgram hr/mL, respectively. The absolute availability of the drug through oral administration is
- (a) 125% (b) 250 % (c) 12.5% (d) 1.25%
94. Geriatric populations should be included in the following Phase of clinical trials
- (a) Phase I (b) Phase II (c) Phase III (d) Phase IV

95. Class 100 area is referred to
 (a) Manufacturing area (b) Aseptic area
 (c) Clean room (d) Ware house
96. How many mL of a 1:500 w/v stock solution should be used to make 5 liters of 1:2000 w/v solution
 (a) 750 mL (b) 1000 ml (c) 1250 mL (d) 1500 mL
97. The Volume of distribution of a drug administered at a dose of 300 mg and exhibiting 30 microgram /mL instantaneous concentration in plasma shall be
 (a) 10 L (b) 100 L (c) 1.0 L (d) 0.10 L
98. It is required to maintain a therapeutic concentration of 10 microgram/mL for 12 hours of a drug having half life of 1.386 hr and Vd of 5 L. The dose required in a sustained release product will be
 (a) 600 mg (b) 300 mg (c) 30 mg (d) 60 mg
99. Which one of the following is **NOT** an ex-officio member of Pharmacy Council of India
 (a) The Director General of Health Services
 (b) The Director of Central Drugs Laboratory
 (c) The Drugs Controller General of India
 (d) The Director of Pharmacopoeia Laboratory
100. In which of the following techniques the sample is kept below triple point
 (a) Lyophilization (b) Spray drying
 (c) Spray congealing (d) Centrifugation

End of paper

ANSWER KEY GPAT 2010

| | | | | | | | | | |
|------|------|------|------|------|------|------|------|------|-------|
| 1-b | 2-c | 3-b | 4-c | 5-d | 6-b | 7-b | 8-c | 9-d | 10-b |
| 11-b | 12-b | 13-a | 14-c | 15-c | 16-b | 17-b | 18-d | 19-b | 20-d |
| 21-b | 22-d | 23-d | 24-b | 25-b | 26-b | 27-c | 28-b | 29-c | 30-c |
| 31-d | 32-d | 33-c | 34-a | 35-c | 36-d | 37-c | 38-a | 39-a | 40-a |
| 41-a | 42-d | 43-c | 44-b | 45-d | 46-d | 47-d | 48-b | 49-a | 50-b |
| 51-d | 52-d | 53-c | 54-a | 55-d | 56-c | 57-a | 58-a | 59-b | 60-b |
| 61-b | 62-c | 63-b | 64-a | 65-d | 66-a | 67-b | 68-a | 69-d | 70-a |
| 71-b | 72-c | 73-b | 74-c | 75-b | 76-a | 77-b | 78-c | 79-c | 80-d |
| 81-a | 82-c | 83-d | 84-a | 85-d | 86-d | 87-d | 88-d | 89-b | 90-c |
| 91-a | 92-d | 93-c | 94-c | 95-b | 96-c | 97-a | 98-a | 99-d | 100-a |