

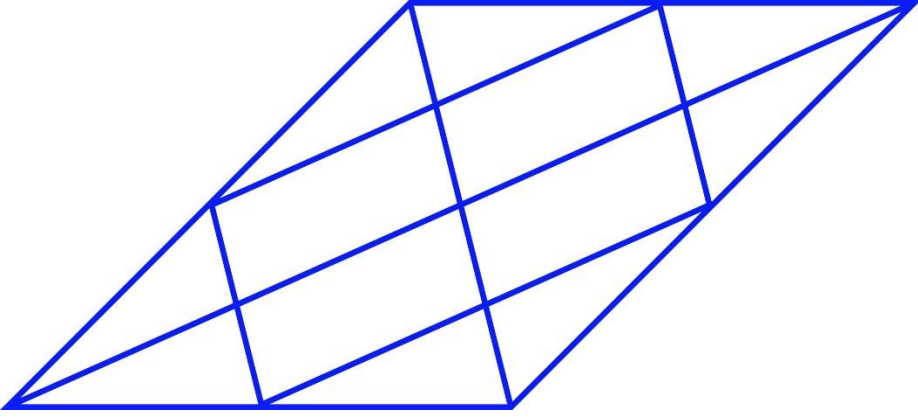
General Aptitude (GA)**Q.1 – Q.5 Carry ONE mark Each**

Q.1	Rafi told Mary, “I am thinking of watching a film this weekend.” The following reports the above statement in indirect speech: Rafi told Mary that he _____ of watching a film that weekend.
(A)	thought
(B)	is thinking
(C)	am thinking
(D)	was thinking

Q.2	Permit : _____ : : Enforce : Relax (By word meaning)
(A)	Allow
(B)	Forbid
(C)	License
(D)	Reinforce

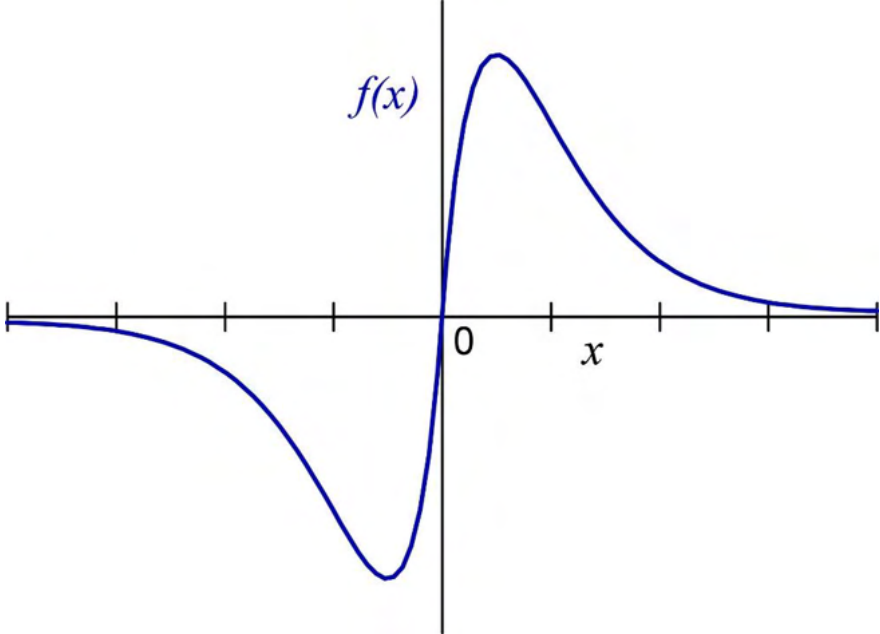
Q.3	Given a fair six-faced dice where the faces are labelled '1', '2', '3', '4', '5', and '6', what is the probability of getting a '1' on the first roll of the dice and a '4' on the second roll?
(A)	$\frac{1}{36}$
(B)	$\frac{1}{6}$
(C)	$\frac{5}{6}$
(D)	$\frac{1}{3}$

Q.4	<p>A recent survey shows that 65% of tobacco users were advised to stop consuming tobacco. The survey also shows that 3 out of 10 tobacco users attempted to stop using tobacco.</p> <p>Based only on the information in the above passage, which one of the following options can be logically inferred with <i>certainty</i>?</p>
(A)	A majority of tobacco users who were advised to stop consuming tobacco made an attempt to do so.
(B)	A majority of tobacco users who were advised to stop consuming tobacco did not attempt to do so.
(C)	Approximately 30% of tobacco users successfully stopped consuming tobacco.
(D)	Approximately 65% of tobacco users successfully stopped consuming tobacco.

Q.5	How many triangles are present in the given figure?
	
(A)	12
(B)	16
(C)	20
(D)	24

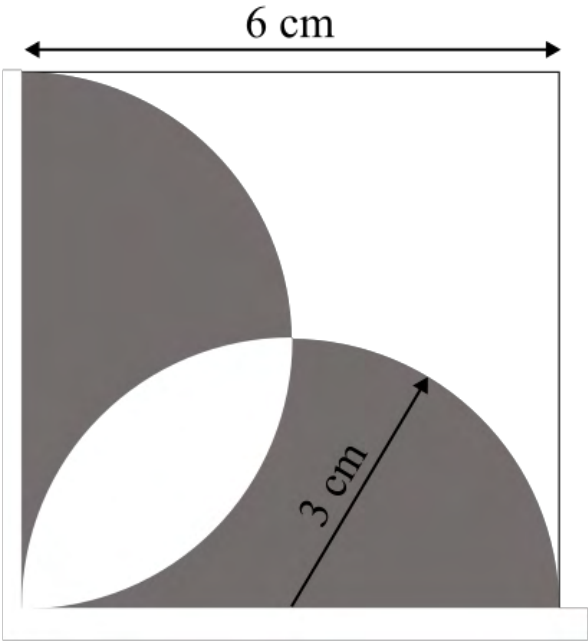
Q.6 – Q.10 Carry TWO marks Each

<p>Q.6</p>	<p>Students of all the departments of a college who have successfully completed the registration process are eligible to vote in the upcoming college elections. However, by the time the due date for registration was over, it was found that suprisingly none of the students from the Department of Human Sciences had completed the registration process.</p> <p>Based only on the information provided above, which one of the following sets of statement(s) can be logically inferred with <i>certainty</i>?</p> <ul style="list-style-type: none"> (i) All those students who would not be eligible to vote in the college elections would certainly belong to the Department of Human Sciences. (ii) None of the students from departments other than Human Sciences failed to complete the registration process within the due time. (iii) All the eligible voters would certainly be students who are not from the Department of Human Sciences.
(A)	(i) and (ii)
(B)	(i) and (iii)
(C)	only (i)
(D)	only (iii)

Q.7	Which one of the following options represents the given graph?
	
(A)	$f(x) = x^2 2^{- x }$
(B)	$f(x) = x 2^{- x }$
(C)	$f(x) = x 2^{-x}$
(D)	$f(x) = x 2^{-x}$

Q.8	<p>Which one of the options does NOT describe the passage below or follow from it?</p> <p>We tend to think of cancer as a ‘modern’ illness because its metaphors are so modern. It is a disease of overproduction, of sudden growth, a growth that is unstoppable, tipped into the abyss of no control. Modern cell biology encourages us to imagine the cell as a molecular machine. Cancer is that machine unable to quench its initial command (to grow) and thus transform into an indestructible, self-propelled automaton.</p> <p>[Adapted from <i>The Emperor of All Maladies</i> by Siddhartha Mukherjee]</p>
(A)	It is a reflection of why cancer seems so modern to most of us.
(B)	It tells us that modern cell biology uses and promotes metaphors of machinery.
(C)	Modern cell biology encourages metaphors of machinery, and cancer is often imagined as a machine.
(D)	Modern cell biology never uses figurative language, such as metaphors, to describe or explain anything.

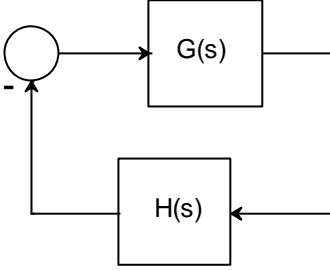
Q.9	The digit in the unit's place of the product $3^{999} \times 7^{1000}$ is _____.
(A)	7
(B)	1
(C)	3
(D)	9

<p>Q.10</p>	<p>A square with sides of length 6 cm is given. The boundary of the shaded region is defined by two semi-circles whose diameters are the sides of the square, as shown.</p> <p>The area of the shaded region is _____ cm².</p>
	
<p>(A)</p>	<p>6π</p>
<p>(B)</p>	<p>18</p>
<p>(C)</p>	<p>20</p>
<p>(D)</p>	<p>9π</p>

Electrical Engineering**Q.11 – Q.35 Carry ONE mark Each**

Q.11	For a given vector $\mathbf{w} = [1 \ 2 \ 3]^T$, the vector normal to the plane defined by $\mathbf{w}^T \mathbf{x} = 1$ is
(A)	$[-2 \ -2 \ 2]^T$
(B)	$[3 \ 0 \ -1]^T$
(C)	$[3 \ 2 \ 1]^T$
(D)	$[1 \ 2 \ 3]^T$

Q.12	For the block diagram shown in the figure, the transfer function $\frac{Y(s)}{R(s)}$ is
(A)	$\frac{2s + 3}{s + 1}$
(B)	$\frac{3s + 2}{s - 1}$
(C)	$\frac{s + 1}{3s + 2}$
(D)	$\frac{3s + 2}{s + 1}$

<p>Q.13</p>	<p>In the Nyquist plot of the open-loop transfer function</p> $G(s)H(s) = \frac{3s + 5}{s - 1}$ <p>corresponding to the feedback loop shown in the figure, the infinite semi-circular arc of the Nyquist contour in s-plane is mapped into a point at</p>
	
<p>(A)</p>	<p>$G(s)H(s) = \infty$</p>
<p>(B)</p>	<p>$G(s)H(s) = 0$</p>
<p>(C)</p>	<p>$G(s)H(s) = 3$</p>
<p>(D)</p>	<p>$G(s)H(s) = -5$</p>

Q.14	Consider a unity-gain negative feedback system consisting of the plant $G(s)$ (given below) and a proportional-integral controller. Let the proportional gain and integral gain be 3 and 1, respectively. For a unit step reference input, the final values of the controller output and the plant output, respectively, are										
	$G(s) = \frac{1}{s - 1}$										
(A)	∞, ∞										
(B)	1, 0										
(C)	1, -1										
(D)	-1, 1										
Q.15	The following columns present various modes of induction machine operation and the ranges of slip <table style="margin-left: auto; margin-right: auto; border: none;"> <thead> <tr> <th style="text-align: center;">A</th> <th style="text-align: center;">B</th> </tr> <tr> <th style="text-align: center;"><u>Mode of operation</u></th> <th style="text-align: center;"><u>Range of Slip</u></th> </tr> </thead> <tbody> <tr> <td style="text-align: center;">a. Running in generator mode</td> <td style="text-align: center;">p) From 0.0 to 1.0</td> </tr> <tr> <td style="text-align: center;">b. Running in motor mode</td> <td style="text-align: center;">q) From 1.0 to 2.0</td> </tr> <tr> <td style="text-align: center;">c. Plugging in motor mode</td> <td style="text-align: center;">r) From -1.0 to 0.0</td> </tr> </tbody> </table> <p>The correct matching between the elements in column A with those of column B is</p>	A	B	<u>Mode of operation</u>	<u>Range of Slip</u>	a. Running in generator mode	p) From 0.0 to 1.0	b. Running in motor mode	q) From 1.0 to 2.0	c. Plugging in motor mode	r) From -1.0 to 0.0
A	B										
<u>Mode of operation</u>	<u>Range of Slip</u>										
a. Running in generator mode	p) From 0.0 to 1.0										
b. Running in motor mode	q) From 1.0 to 2.0										
c. Plugging in motor mode	r) From -1.0 to 0.0										
(A)	a-r, b-p, and c-q										
(B)	a-r, b-q, and c-p										
(C)	a-p, b-r, and c-q										
(D)	a-q, b-p, and c-r										

Q.16	A 10-pole, 50 Hz, 240 V, single phase induction motor runs at 540 RPM while driving rated load. The frequency of induced rotor currents due to backward field is
(A)	100 Hz
(B)	95 Hz
(C)	10 Hz
(D)	5 Hz
Q.17	A continuous-time system that is initially at rest is described by $\frac{dy(t)}{dt} + 3y(t) = 2x(t),$ where $x(t)$ is the input voltage and $y(t)$ is the output voltage. The impulse response of the system is
(A)	$3e^{-2t}$
(B)	$\frac{1}{3}e^{-2t}u(t)$
(C)	$2e^{-3t}u(t)$
(D)	$2e^{-3t}$

Q.18	The Fourier transform $X(\omega)$ of the signal $x(t)$ is given by $X(\omega) = 1, \text{ for } \omega < W_0$ $= 0, \text{ for } \omega > W_0$ Which one of the following statements is true?
(A)	$x(t)$ tends to be an impulse as $W_0 \rightarrow \infty$.
(B)	$x(0)$ decreases as W_0 increases.
(C)	At $t = \frac{\pi}{2W_0}$, $x(t) = -\frac{1}{\pi}$
(D)	At $t = \frac{\pi}{2W_0}$, $x(t) = \frac{1}{\pi}$
Q.19	The Z-transform of a discrete signal $x[n]$ is $X(z) = \frac{4z}{(z-\frac{1}{5})(z-\frac{2}{3})(z-3)}$ with $ROC = R$. Which one of the following statements is true?
(A)	Discrete-time Fourier transform of $x[n]$ converges if R is $ z > 3$
(B)	Discrete-time Fourier transform of $x[n]$ converges if R is $\frac{2}{3} < z < 3$
(C)	Discrete-time Fourier transform of $x[n]$ converges if R is such that $x[n]$ is a left-sided sequence
(D)	Discrete-time Fourier transform of $x[n]$ converges if R is such that $x[n]$ is a right-sided sequence

<p>Q.20</p>	<p>For the three-bus power system shown in the figure, the trip signals to the circuit breakers B_1 to B_9 are provided by overcurrent relays R_1 to R_9, respectively, some of which have directional properties also. The necessary condition for the system to be protected for short circuit fault at any part of the system between bus 1 and the $R-L$ loads with isolation of minimum portion of the network using minimum number of directional relays is</p>
<p>(A)</p>	<p>R_3 and R_4 are directional overcurrent relays blocking faults towards bus 2</p>
<p>(B)</p>	<p>R_3 and R_4 are directional overcurrent relays blocking faults towards bus 2 and R_7 is directional overcurrent relay blocking faults towards bus 3</p>
<p>(C)</p>	<p>R_3 and R_4 are directional overcurrent relays blocking faults towards Line 1 and Line 2, respectively, R_7 is directional overcurrent relay blocking faults towards Line 3 and R_5 is directional overcurrent relay blocking faults towards bus 2</p>
<p>(D)</p>	<p>R_3 and R_4 are directional overcurrent relays blocking faults towards Line 1 and Line 2, respectively.</p>

<p>Q.21</p>	<p>The expressions of fuel cost of two thermal generating units as a function of the respective power generation P_{G1} and P_{G2} are given as</p> $F_1(P_{G1}) = 0.1aP_{G1}^2 + 40 P_{G1} + 120 \text{ Rs/hour} \quad 0 \text{ MW} \leq P_{G1} \leq 350 \text{ MW}$ $F_2(P_{G2}) = 0.2P_{G2}^2 + 30 P_{G2} + 100 \text{ Rs/hour} \quad 0 \text{ MW} \leq P_{G2} \leq 300 \text{ MW}$ <p>where a is a constant. For a given value of a, optimal dispatch requires the total load of 290 MW to be shared as $P_{G1} = 175 \text{ MW}$ and $P_{G2} = 115 \text{ MW}$. With the load remaining unchanged, the value of a is increased by 10% and optimal dispatch is carried out. The changes in P_{G1} and the total cost of generation, $F (= F_1 + F_2)$ in Rs/hour will be as follows</p>
(A)	P_{G1} will decrease and F will increase
(B)	Both P_{G1} and F will increase
(C)	P_{G1} will increase and F will decrease
(D)	Both P_{G1} and F will decrease

Q.22 The four stator conductors (A, A', B and B') of a rotating machine are carrying DC currents of the same value, the directions of which are shown in the figure (i). The rotor coils $a-a'$ and $b-b'$ are formed by connecting the back ends of conductors 'a' and 'a'' and 'b' and 'b'', respectively, as shown in figure (ii). The e.m.f. induced in coil $a-a'$ and coil $b-b'$ are denoted by $E_{a-a'}$ and $E_{b-b'}$, respectively. If the rotor is rotated at uniform angular speed ω rad/s in the clockwise direction then which of the following correctly describes the $E_{a-a'}$ and $E_{b-b'}$?

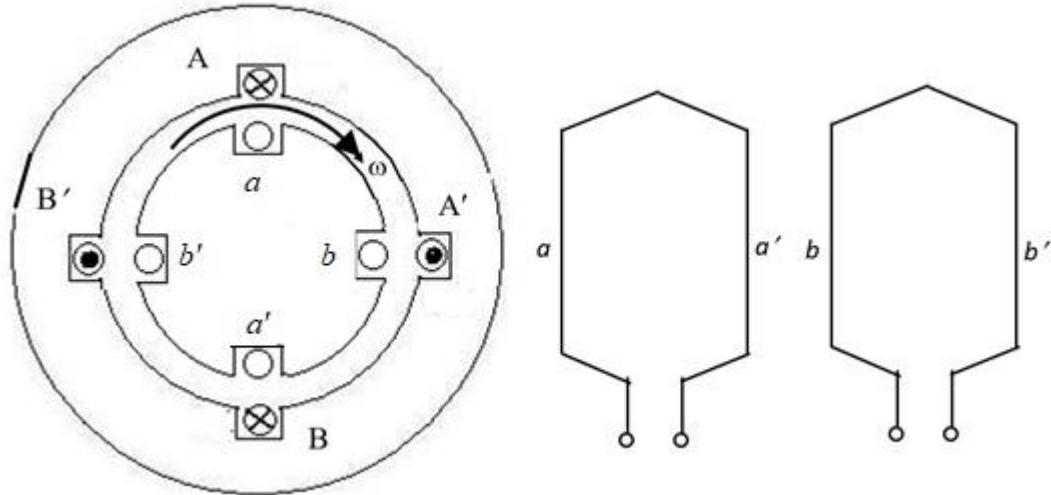
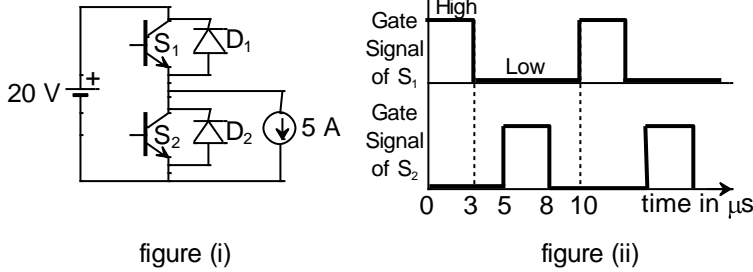


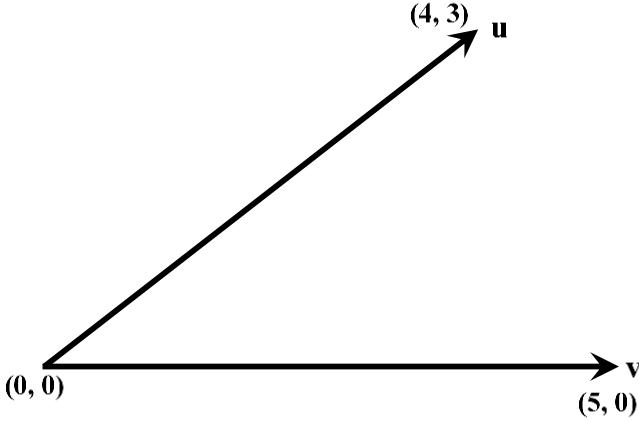
figure (i): cross-sectional view figure (ii): rotor winding connection diagram

- (A) $E_{a-a'}$ and $E_{b-b'}$ have finite magnitudes and are in the same phase
- (B) $E_{a-a'}$ and $E_{b-b'}$ have finite magnitudes with $E_{b-b'}$ leading $E_{a-a'}$
- (C) $E_{a-a'}$ and $E_{b-b'}$ have finite magnitudes with $E_{a-a'}$ leading $E_{b-b'}$
- (D) $E_{a-a'} = E_{b-b'} = 0$

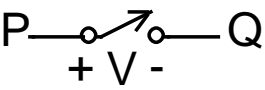
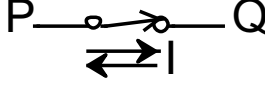
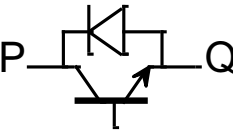
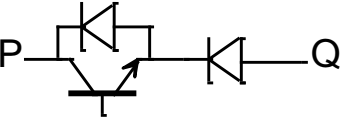
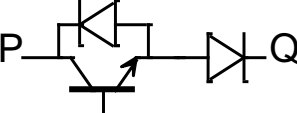
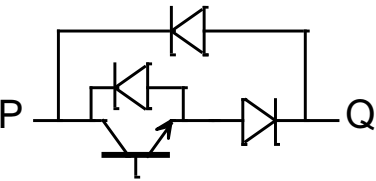
Q.23 The chopper circuit shown in figure (i) feeds power to a 5 A DC constant current source. The switching frequency of the chopper is 100 kHz. All the components can be assumed to be ideal. The gate signals of switches S_1 and S_2 are shown in figure (ii). Average voltage across the 5 A current source is



- (A) 10 V
- (B) 6 V
- (C) 12 V
- (D) 20 V

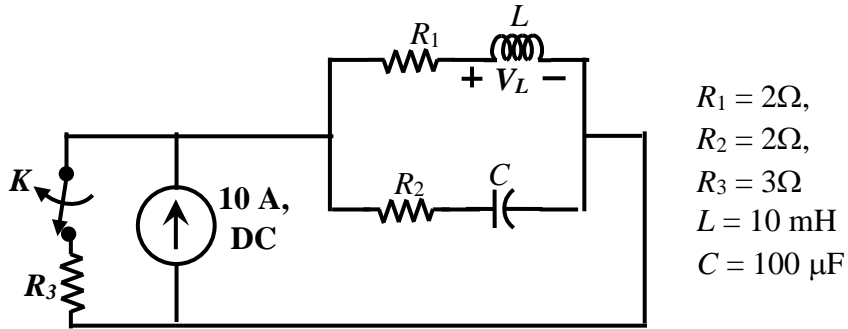
Q.24	In the figure, the vectors \mathbf{u} and \mathbf{v} are related as: $\mathbf{A}\mathbf{u} = \mathbf{v}$ by a transformation matrix \mathbf{A} . The correct choice of \mathbf{A} is
	
(A)	$\begin{bmatrix} 4 & 3 \\ \frac{1}{5} & \frac{1}{5} \\ 3 & 4 \\ -\frac{1}{5} & \frac{1}{5} \end{bmatrix}$
(B)	$\begin{bmatrix} 4 & 3 \\ \frac{1}{5} & -\frac{1}{5} \\ 3 & 4 \\ \frac{1}{5} & \frac{1}{5} \end{bmatrix}$
(C)	$\begin{bmatrix} 4 & 3 \\ \frac{1}{5} & \frac{1}{5} \\ 3 & 4 \\ \frac{1}{5} & \frac{1}{5} \end{bmatrix}$
(D)	$\begin{bmatrix} 4 & 3 \\ \frac{1}{5} & -\frac{1}{5} \\ 3 & 4 \\ \frac{1}{5} & -\frac{1}{5} \end{bmatrix}$

Q.25	<p>One million random numbers are generated from a statistically stationary process with a Gaussian distribution with mean zero and standard deviation σ_o.</p> <p>The σ_o is estimated by randomly drawing out 10,000 numbers of samples (x_n). The estimates $\hat{\sigma}_1, \hat{\sigma}_2$ are computed in the following two ways.</p> $\hat{\sigma}_1^2 = \frac{1}{10000} \sum_{n=1}^{10000} x_n^2 \quad \hat{\sigma}_2^2 = \frac{1}{9999} \sum_{n=1}^{10000} x_n^2$ <p>Which of the following statements is true?</p>
(A)	$E(\hat{\sigma}_2^2) = \sigma_o^2$
(B)	$E(\hat{\sigma}_2) = \sigma_o$
(C)	$E(\hat{\sigma}_1^2) = \sigma_o^2$
(D)	$E(\hat{\sigma}_1) = E(\hat{\sigma}_2)$

<p>Q.26</p>	<p>A semiconductor switch needs to block voltage V of only one polarity ($V > 0$) during OFF state as shown in figure (i) and carry current in both directions during ON state as shown in figure (ii). Which of the following switch combination(s) will realize the same?</p>
	<div style="display: flex; justify-content: space-around; align-items: center;"> <div style="text-align: center;">  <p>figure (i)</p> </div> <div style="text-align: center;">  <p>figure (ii)</p> </div> </div>
<p>(A)</p>	
<p>(B)</p>	
<p>(C)</p>	
<p>(D)</p>	

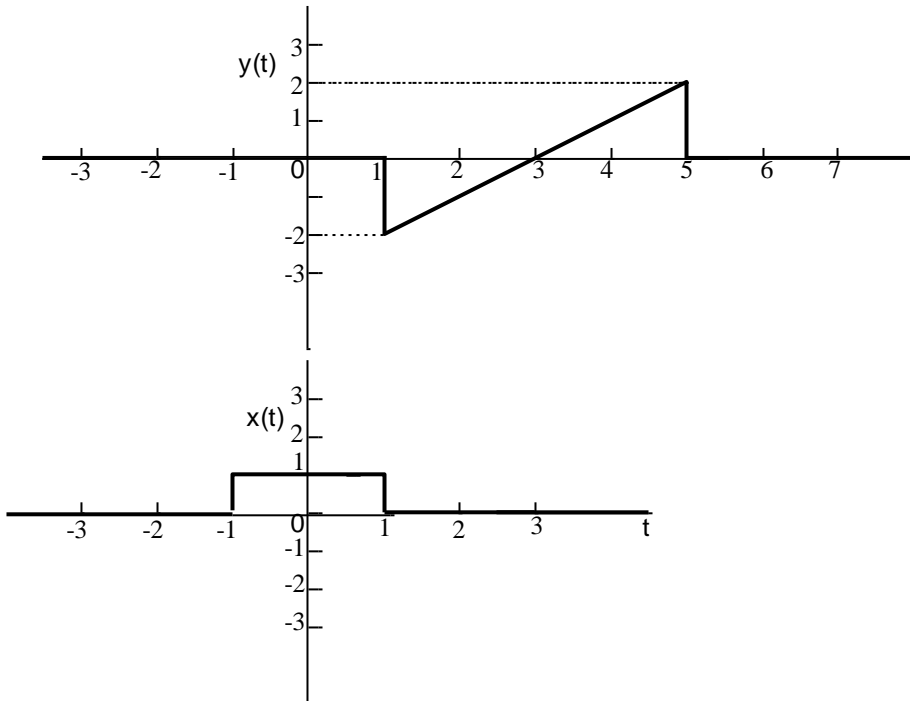
Q.27	Which of the following statement(s) is/are true?
(A)	If an LTI system is causal, it is stable
(B)	A discrete time LTI system is causal if and only if its response to a step input $u[n]$ is 0 for $n < 0$
(C)	If a discrete time LTI system has an impulse response $h[n]$ of finite duration the system is stable
(D)	If the impulse response $0 < h[n] < 1$ for all n , then the LTI system is stable.
Q.28	<p>The bus admittance (Y_{bus}) matrix of a 3-bus power system is given below.</p> $\begin{matrix} & 1 & 2 & 3 \\ \begin{matrix} 1 \\ 2 \\ 3 \end{matrix} & \begin{bmatrix} -j15 & j10 & j5 \\ j10 & -j13.5 & j4 \\ j5 & j4 & -j8 \end{bmatrix} \end{matrix}$ <p>Considering that there is no shunt inductor connected to any of the buses, which of the following can NOT be true?</p>
(A)	Line charging capacitor of finite value is present in all three lines
(B)	Line charging capacitor of finite value is present in line 2-3 only
(C)	Line charging capacitor of finite value is present in line 2-3 only and shunt capacitor of finite value is present in bus 1 only
(D)	Line charging capacitor of finite value is present in line 2-3 only and shunt capacitor of finite value is present in bus 3 only

Q.29 The value of parameters of the circuit shown in the figure are
 $R_1 = 2\Omega, R_2 = 2\Omega, R_3 = 3\Omega, L = 10 \text{ mH}, C = 100 \mu\text{F}$
 For time $t < 0$, the circuit is at steady state with the switch 'K' in closed condition. If the switch is opened at $t = 0$, the value of the voltage across the inductor (V_L) at $t = 0^+$ in Volts is _____ (Round off to 1 decimal place).

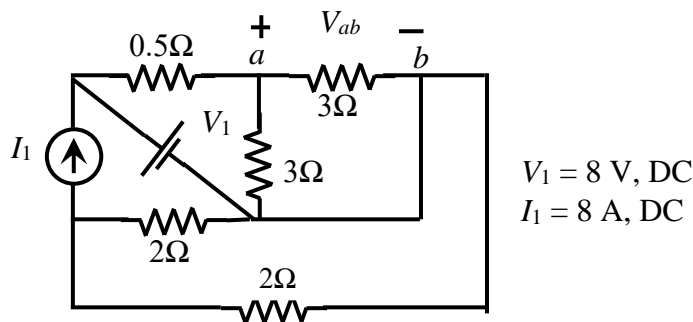


Q.30 A separately excited DC motor rated 400 V, 15 A, 1500 RPM drives a constant torque load at rated speed operating from 400 V DC supply drawing rated current. The armature resistance is 1.2Ω . If the supply voltage drops by 10% with field current unaltered then the resultant speed of the motor in RPM is _____ (Round off to the nearest integer).

Q.31 For the signals $x(t)$ and $y(t)$ shown in the figure, $z(t) = x(t) * y(t)$ is maximum at $t = T_1$. Then T_1 in seconds is _____ (Round off to the nearest integer).

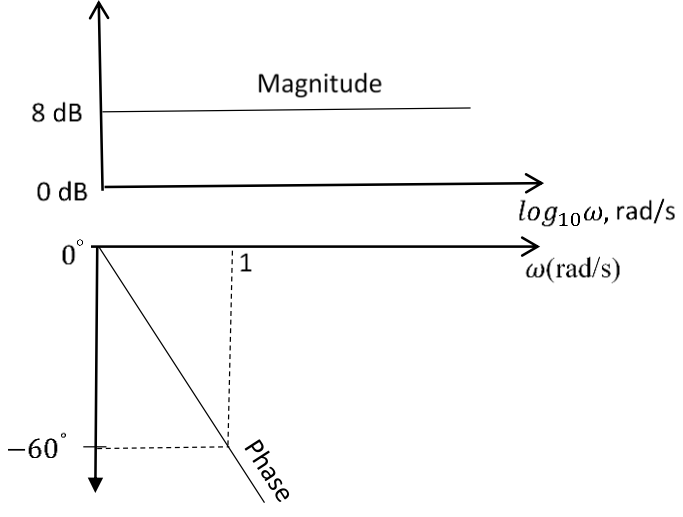


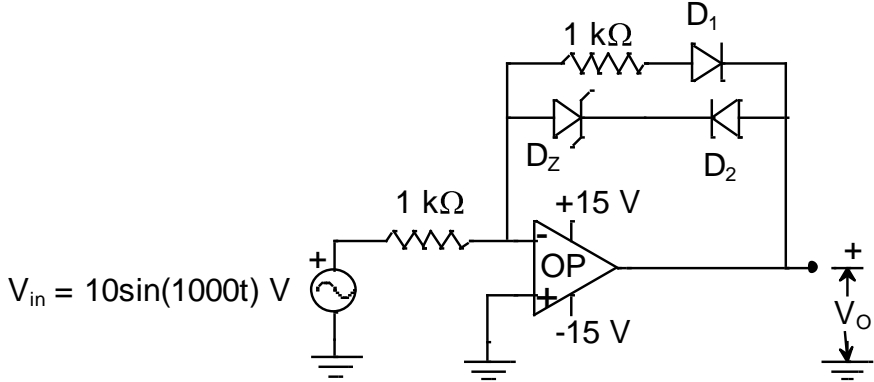
Q.32 For the circuit shown in the figure, $V_1 = 8\text{ V}$, DC and $I_1 = 8\text{ A}$, DC. The voltage V_{ab} in Volts is _____ (Round off to 1 decimal place).



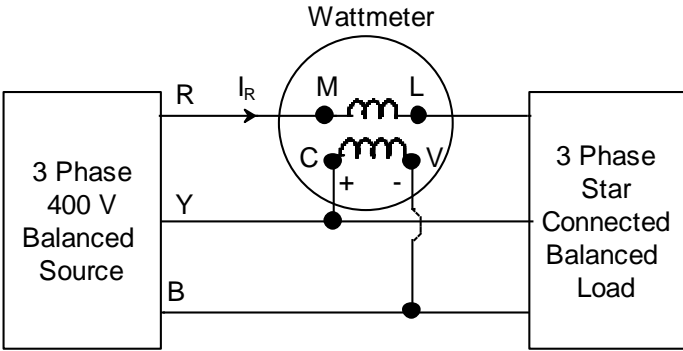
Q.33	<p>A 50 Hz, 275 kV line of length 400 km has the following parameters:</p> <p>Resistance, $R = 0.035 \Omega/\text{km}$;</p> <p>Inductance, $L = 1 \text{ mH /km}$;</p> <p>Capacitance, $C = 0.01 \mu\text{F/km}$;</p> <p>The line is represented by the nominal-π model. With the magnitudes of the sending end and the receiving end voltages of the line (denoted by V_S and V_R, respectively) maintained at 275 kV, the phase angle difference (θ) between V_S and V_R required for maximum possible active power to be delivered to the receiving end, in degree is _____ (Round off to 2 decimal places).</p>
Q.34	<p>In the following differential equation, the numerically obtained value of $y(t)$, at $t=1$, is _____ (Round off to 2 decimal places).</p>
	$\frac{dy}{dt} = \frac{e^{-at}}{2 + at}, \quad \alpha = 0.01 \text{ and } y(0) = 0$
Q.35	<p>Three points in the x-y plane are $(-1, 0.8)$, $(0, 2.2)$ and $(1, 2.8)$. The value of the slope of the best fit straight line in the least square sense is _____ (Round off to 2 decimal places).</p>

Q.36 – Q.65 Carry TWO marks Each

<p>Q.36</p>	<p>The magnitude and phase plots of an LTI system are shown in the figure. The transfer function of the system is</p>
	 <p>The figure shows two Bode plots for an LTI system. The top plot is the magnitude plot, with the vertical axis in dB and the horizontal axis in $\log_{10}\omega$, rad/s. The magnitude is constant at 8 dB. The bottom plot is the phase plot, with the vertical axis in degrees and the horizontal axis in ω (rad/s). The phase starts at 0° and decreases linearly, reaching -60° at $\omega = 1$ rad/s.</p>
<p>(A)</p>	<p>$2.51e^{-0.032s}$</p>
<p>(B)</p>	<p>$\frac{e^{-2.514s}}{s + 1}$</p>
<p>(C)</p>	<p>$1.04e^{-2.514s}$</p>
<p>(D)</p>	<p>$2.51e^{-1.047s}$</p>

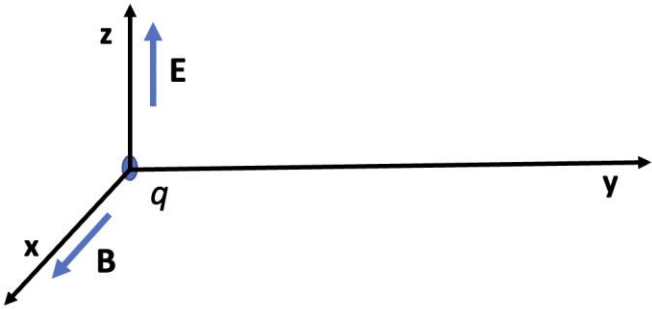
<p>Q.37</p>	<p>Consider the OP AMP based circuit shown in the figure. Ignore the conduction drops of diodes D_1 and D_2. All the components are ideal and the breakdown voltage of the Zener is 5 V. Which of the following statements is true?</p>
	 <p>$V_{in} = 10\sin(1000t) \text{ V}$</p>
<p>(A)</p>	<p>The maximum and minimum values of the output voltage V_o are +15 V and -10 V, respectively.</p>
<p>(B)</p>	<p>The maximum and minimum values of the output voltage V_o are +5 V and -15 V, respectively.</p>
<p>(C)</p>	<p>The maximum and minimum values of the output voltage V_o are +10 V and -5 V, respectively.</p>
<p>(D)</p>	<p>The maximum and minimum values of the output voltage V_o are +5 V and -10 V, respectively.</p>

Q.38	Consider a lead compensator of the form $K(s) = \frac{1 + \frac{s}{a}}{1 + \frac{s}{\beta a}}, \beta > 1, a > 0$ The frequency at which this compensator produces maximum phase lead is 4 rad/s. At this frequency, the gain amplification provided by the controller, assuming asymptotic Bode-magnitude plot of $K(s)$, is 6 dB. The values of a, β , respectively, are
(A)	1, 16
(B)	2, 4
(C)	3, 5
(D)	2.66, 2.25

<p>Q.39</p>	<p>A 3-phase, star-connected, balanced load is supplied from a 3-phase, 400 V (rms), balanced voltage source with phase sequence R-Y-B, as shown in the figure. If the wattmeter reading is -400 W and the line current is $I_R = 2\text{ A}$ (rms), then the power factor of the load per phase is</p>
	
<p>(A)</p>	<p>Unity</p>
<p>(B)</p>	<p>0.5 leading</p>
<p>(C)</p>	<p>0.866 leading</p>
<p>(D)</p>	<p>0.707 lagging</p>

<p>Q.40</p>	<p>An 8 bit ADC converts analog voltage in the range of 0 to +5 V to the corresponding digital code as per the conversion characteristics shown in figure. For $V_{in} = 1.9922\text{ V}$, which of the following digital output, given in hex, is true ?</p>												
	<table border="1"> <caption>ADC Conversion Characteristics</caption> <thead> <tr> <th>Analog Input (mV)</th> <th>Digital Output (Hex)</th> </tr> </thead> <tbody> <tr> <td>0</td> <td>00H</td> </tr> <tr> <td>9.8</td> <td>01H</td> </tr> <tr> <td>19.6</td> <td>02H</td> </tr> <tr> <td>39.2</td> <td>03H</td> </tr> <tr> <td>58.8</td> <td>04H</td> </tr> </tbody> </table>	Analog Input (mV)	Digital Output (Hex)	0	00H	9.8	01H	19.6	02H	39.2	03H	58.8	04H
Analog Input (mV)	Digital Output (Hex)												
0	00H												
9.8	01H												
19.6	02H												
39.2	03H												
58.8	04H												
<p>(A)</p>	<p>64H</p>												
<p>(B)</p>	<p>65H</p>												
<p>(C)</p>	<p>66H</p>												
<p>(D)</p>	<p>67H</p>												

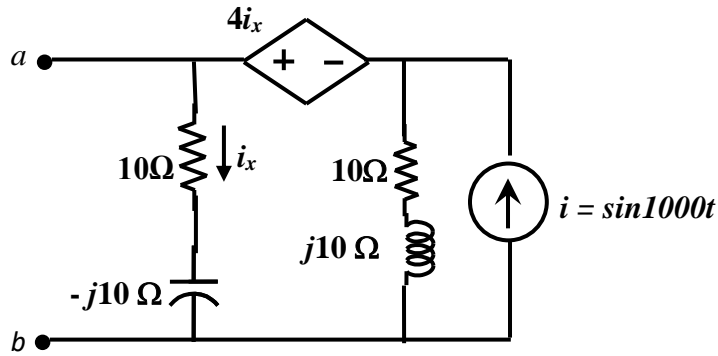
<p>Q.41</p>	<p>The three-bus power system shown in the figure has one alternator connected to bus 2 which supplies 200 MW and 40 MVAR power. Bus 3 is infinite bus having a voltage of magnitude $V_3 = 1.0$ p.u. and angle of -15°. A variable current source, $I \angle\phi$ is connected at bus 1 and controlled such that the magnitude of the bus 1 voltage is maintained at 1.05 p.u. and the phase angle of the source current, $\phi = \theta_1 \pm \frac{\pi}{2}$, where θ_1 is the phase angle of the bus 1 voltage. The three buses can be categorized for load flow analysis as</p>
<p>(A)</p>	<p>Bus 1 Slack bus Bus 2 $P - V$ bus Bus 3 $P - Q$ bus</p>
<p>(B)</p>	<p>Bus 1 $P - V$ bus Bus 2 $P - V$ bus Bus 3 Slack bus</p>
<p>(C)</p>	<p>Bus 1 $P - Q$ bus Bus 2 $P - Q$ bus Bus 3 Slack bus</p>
<p>(D)</p>	<p>Bus 1 $P - V$ bus Bus 2 $P - Q$ bus Bus 3 Slack bus</p>

<p>Q.42</p>	<p>Consider the following equation in a 2-D real-space.</p> $ x_1 ^p + x_2 ^p = 1 \text{ for } p > 0$ <p>Which of the following statement(s) is/are true.</p>
<p>(A)</p>	<p>When $p = 2$, the area enclosed by the curve is π.</p>
<p>(B)</p>	<p>When p tends to ∞, the area enclosed by the curve tends to 4.</p>
<p>(C)</p>	<p>When p tends to 0, the area enclosed by the curve is 1.</p>
<p>(D)</p>	<p>When $p = 1$, the area enclosed by the curve is 2.</p>
<p>Q.43</p>	<p>In the figure, the electric field \mathbf{E} and the magnetic field \mathbf{B} point to x and z directions, respectively, and have constant magnitudes. A positive charge 'q' is released from rest at the origin. Which of the following statement(s) is/are true.</p>
	
<p>(A)</p>	<p>The charge will move in the direction of \mathbf{z} with constant velocity.</p>
<p>(B)</p>	<p>The charge will always move on the \mathbf{y}-\mathbf{z} plane only.</p>
<p>(C)</p>	<p>The trajectory of the charge will be a circle.</p>
<p>(D)</p>	<p>The charge will progress in the direction of \mathbf{y}.</p>

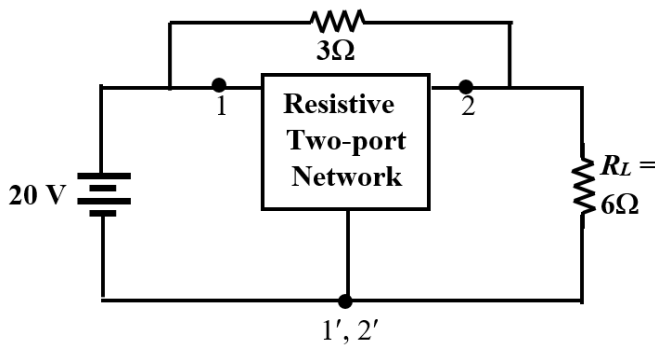
<p>Q.44</p>	<p>All the elements in the circuit shown in the following figure are ideal. Which of the following statements is/are true?</p>
<p>(A)</p>	<p>When switch S is ON, both D_1 and D_2 conducts and D_3 is reverse biased</p>
<p>(B)</p>	<p>When switch S is ON, D_1 conducts and both D_2 and D_3 are reverse biased</p>
<p>(C)</p>	<p>When switch S is OFF, D_1 is reverse biased and both D_2 and D_3 conduct</p>
<p>(D)</p>	<p>When switch S is OFF, D_1 conducts, D_2 is reverse biased and D_3 conducts</p>
<p>Q.45</p>	<p>The expected number of trials for first occurrence of a “head” in a biased coin is known to be 4. The probability of first occurrence of a “head” in the second trial is _____ (Round off to 3 decimal places).</p>
<p>Q.46</p>	<p>Consider the state-space description of an LTI system with matrices</p> $A = \begin{bmatrix} 0 & 1 \\ -1 & -2 \end{bmatrix}, B = \begin{bmatrix} 0 \\ 1 \end{bmatrix}, C = [3 \quad -2], D = 1$ <p>For the input, $\sin(\omega t)$, $\omega > 0$, the value of ω for which the steady-state output of the system will be zero, is _____ (Round off to the nearest integer).</p>

Q.47	A three-phase synchronous motor with synchronous impedance of $0.1+j0.3$ per unit per phase has a static stability limit of 2.5 per unit. The corresponding excitation voltage in per unit is _____ (Round off to 2 decimal places).
Q.48	A three phase 415 V, 50 Hz, 6-pole, 960 RPM, 4 HP squirrel cage induction motor drives a constant torque load at rated speed operating from rated supply and delivering rated output. If the supply voltage and frequency are reduced by 20%, the resultant speed of the motor in RPM (neglecting the stator leakage impedance and rotational losses) is _____ (Round off to the nearest integer).
Q.49	The period of the discrete-time signal $x[n]$ described by the equation below is $N =$ _____ (Round off to the nearest integer).
	$x[n] = 1 + 3\sin\left(\frac{15\pi}{8}n + \frac{3\pi}{4}\right) - 5\sin\left(\frac{\pi}{3}n - \frac{\pi}{4}\right)$
Q.50	The discrete-time Fourier transform of a signal $x[n]$ is $X(\Omega) = (1 + \cos\Omega)e^{-j\Omega}$. Consider that $x_p[n]$ is a periodic signal of period $N = 5$ such that $x_p[n] = x[n], \text{ for } n = 0, 1, 2$ $= 0, \text{ for } n = 3, 4$ Note that $x_p[n] = \sum_{k=0}^{N-1} a_k e^{j\frac{2\pi}{N}kn}$. The magnitude of the Fourier series coefficient a_3 is _____ (Round off to 3 decimal places).

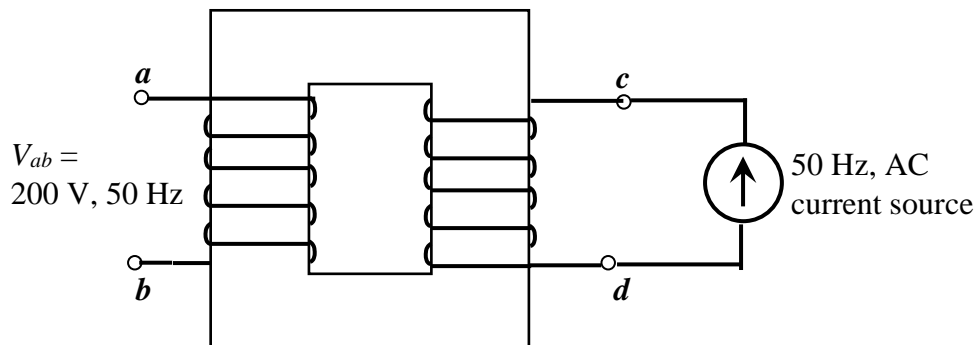
Q.51 For the circuit shown, if $i = \sin 1000t$, the instantaneous value of the Thevenin's equivalent voltage (in Volts) across the terminals $a-b$ at time $t = 5$ ms is _____ (Round off to 2 decimal places).



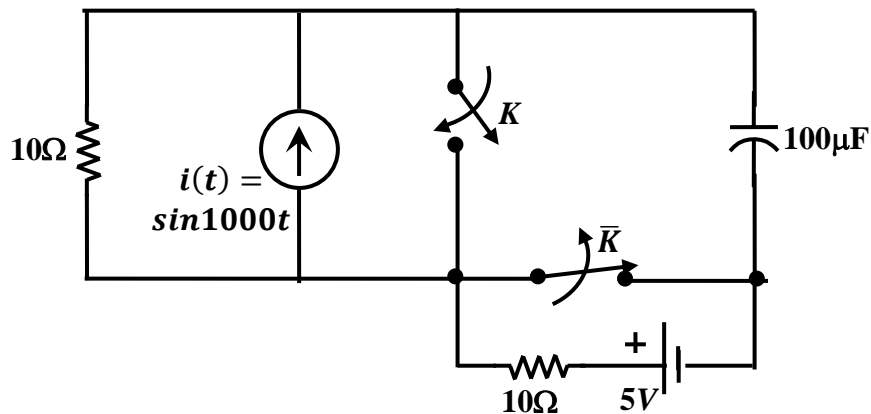
Q.52 The admittance parameters of the passive resistive two-port network shown in the figure are
 $y_{11} = 5 S, y_{22} = 1 S, y_{12} = y_{21} = -2.5 S$
 The power delivered to the load resistor R_L in Watt is _____ (Round off to 2 decimal places).

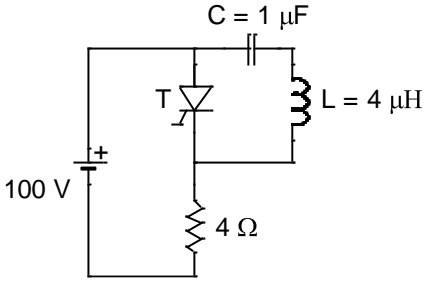
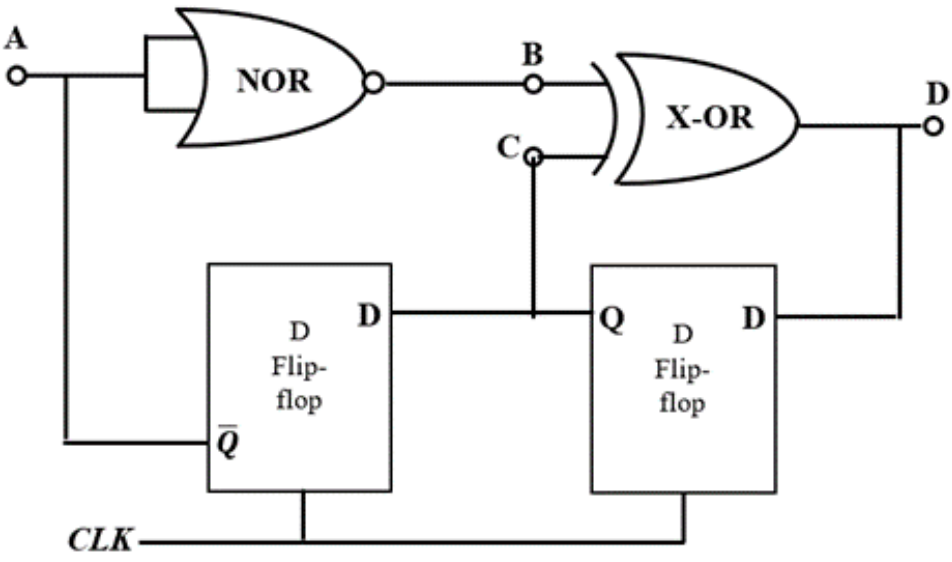


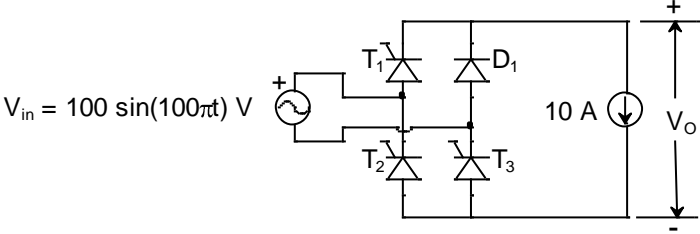
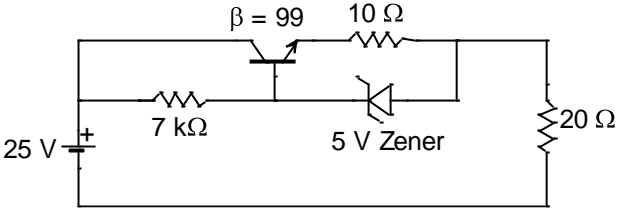
Q.53 When the winding $c-d$ of the single-phase, 50 Hz, two winding transformer is supplied from an AC current source of frequency 50 Hz, the rated voltage of 200 V (rms), 50 Hz is obtained at the open-circuited terminals $a-b$. The cross sectional area of the core is 5000 mm^2 and the average core length traversed by the mutual flux is 500 mm. The maximum allowable flux density in the core is $B_{max} = 1 \text{ Wb/m}^2$ and the relative permeability of the core material is 5000. The leakage impedance of the winding $a-b$ and winding $c-d$ at 50 Hz are $(5 + j100\pi \times 0.16) \Omega$ and $(11.25 + j100\pi \times 0.36) \Omega$, respectively. Considering the magnetizing characteristics to be linear and neglecting core loss, the self-inductance of the winding $a-b$ in millihenry is _____ (Round off to 1 decimal place).



Q.54 The circuit shown in the figure is initially in the steady state with the switch K in open condition and \bar{K} in closed condition. The switch K is closed and \bar{K} is opened simultaneously at the instant $t = t_1$, where $t_1 > 0$. The minimum value of t_1 in milliseconds, such that there is no transient in the voltage across the $100 \mu\text{F}$ capacitor, is _____ (Round off to 2 decimal places).



<p>Q.55</p>	<p>The circuit shown in the figure has reached steady state with thyristor 'T' in OFF condition. Assume that the latching and holding currents of the thyristor are zero. The thyristor is turned ON at $t = 0$ sec. The duration in microseconds for which the thyristor would conduct, before it turns off, is _____ (Round off to 2 decimal places).</p>
	
<p>Q.56</p>	<p>Neglecting the delays due to the logic gates in the circuit shown in figure, the decimal equivalent of the binary sequence [ABCD] of initial logic states, which will not change with clock, is _____.</p>
	

<p>Q.57</p>	<p>In a given 8-bit general purpose micro-controller there are following flags. C-Carry, A-Auxiliary Carry, O-Overflow flag, P-Parity (0 for even, 1 for odd) R0 and R1 are the two general purpose registers of the micro-controller. After execution of the following instructions, the decimal equivalent of the binary sequence of the flag pattern [CAOP] will be _____.</p>
	<p>MOV R0, +0x60 MOV R1, +0x46 ADD R0, R1</p>
<p>Q.58</p>	<p>The single phase rectifier consisting of three thyristors T_1, T_2, T_3 and a diode D_1 feed power to a 10 A constant current load. T_1 and T_3 are fired at $\alpha = 60^\circ$ and T_2 is fired at $\alpha = 240^\circ$. The reference for α is the positive zero crossing of V_{in}. The average voltage V_O across the load in volts is _____ (Round off to 2 decimal places).</p>
	
<p>Q.59</p>	<p>The Zener diode in circuit has a breakdown voltage of 5 V. The current gain β of the transistor in the active region in 99. Ignore base-emitter voltage drop V_{BE}. The current through the 20 Ω resistance in milliamperes is _____ (Round off to 2 decimal places).</p>
	

Q.60

The two-bus power system shown in figure (i) has one alternator supplying a synchronous motor load through a Y- Δ transformer. The positive, negative and zero-sequence diagrams of the system are shown in figures (ii), (iii) and (iv), respectively. All reactances in the sequence diagrams are in p.u. For a bolted line-to-line fault (fault impedance = zero) between phases 'b' and 'c' at bus 1, neglecting all pre-fault currents, the magnitude of the fault current (from phase 'b' to 'c') in p.u. is _____ (Round off to 2 decimal places).

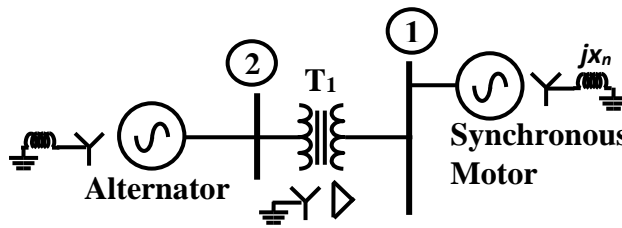


figure (i): Single-line diagram of the power system

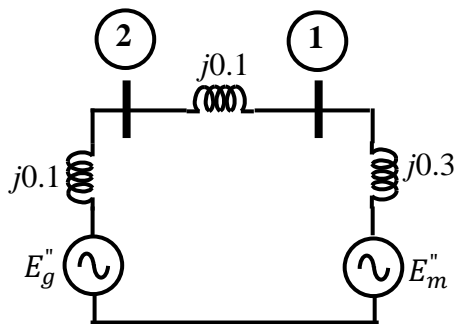


figure (ii): Positive-sequence network

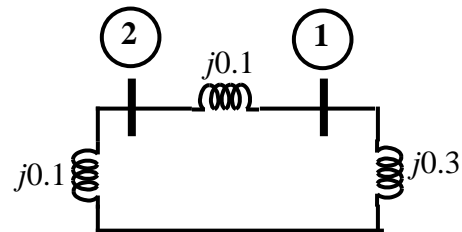


figure (iii): Negative-sequence network

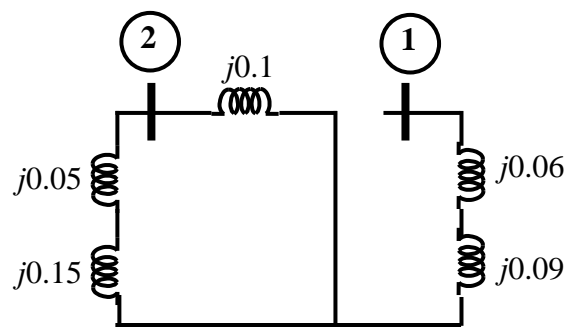
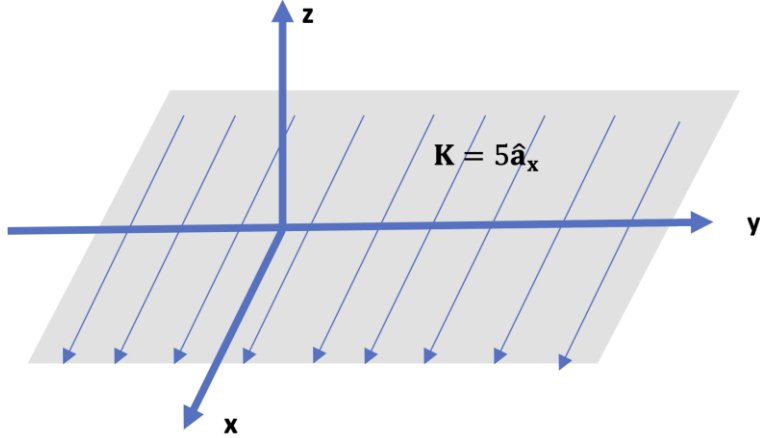
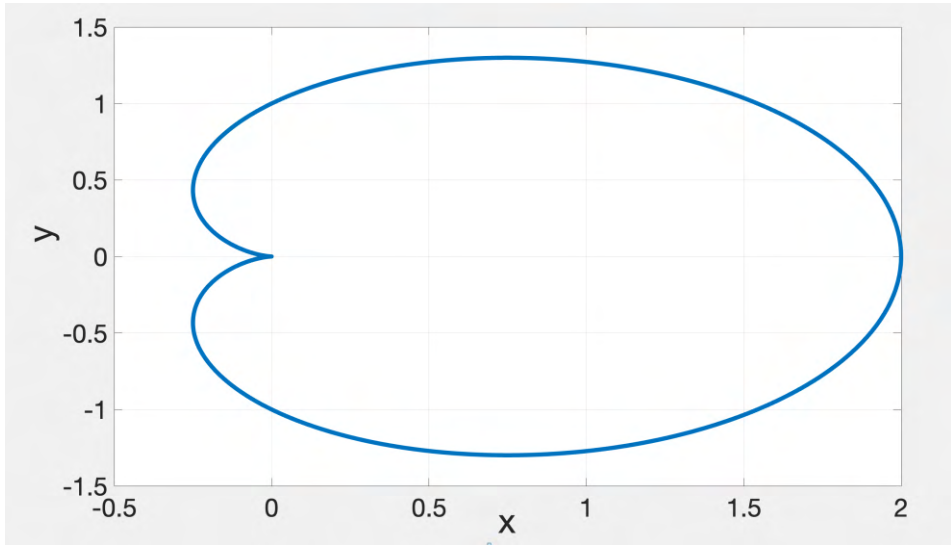
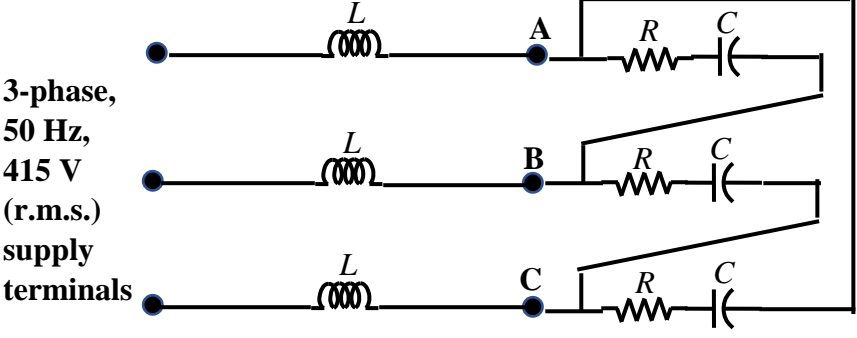


figure (iv): Zero-sequence network

<p>Q.61</p>	<p>An infinite surface of linear current density $\mathbf{K} = 5\hat{\mathbf{a}}_x$ A/m exists on the x-y plane, as shown in the figure. The magnitude of the magnetic field intensity (\mathbf{H}) at a point (1,1,1) due to the surface current in Ampere/meter is _____ (Round off to 2 decimal places).</p>
	
<p>Q.62</p>	<p>The closed curve shown in the figure is described by</p> $r = 1 + \cos\theta, \text{ where } r = \sqrt{x^2 + y^2}; \quad x = r\cos\theta, y = r\sin\theta$ <p>The magnitude of the line integral of the vector field $F = -y\hat{\mathbf{i}} + x\hat{\mathbf{j}}$ around the closed curve is _____ (Round off to 2 decimal places).</p>
	

<p>Q.63</p>	<p>A signal $x(t) = 2\cos(180\pi t)\cos(60\pi t)$ is sampled at 200 Hz and then passed through an ideal low pass filter having cut-off frequency of 100 Hz.</p> <p>The maximum frequency present in the filtered signal in Hz is _____ (Round off to the nearest integer).</p>
<p>Q.64</p>	<p>A balanced delta connected load consisting of the series connection of one resistor ($R = 15 \Omega$) and a capacitor ($C = 212.21 \mu\text{F}$) in each phase is connected to three-phase, 50 Hz, 415 V supply terminals through a line having an inductance of $L = 31.83 \text{ mH}$ per phase, as shown in the figure. Considering the change in the supply terminal voltage with loading to be negligible, the magnitude of the voltage across the terminals V_{AB} in Volts is _____ (Round off to the nearest integer).</p>
	<div style="text-align: center;">  <p>3-phase, 50 Hz, 415 V (r.m.s.) supply terminals</p> <p>$R = 15 \Omega, L = 31.83 \text{ mH}, C = 212.21 \mu\text{F}$</p> </div>
<p>Q.65</p>	<p>A quadratic function of two variables is given as</p> $f(x_1, x_2) = x_1^2 + 2x_2^2 + 3x_1 + 3x_2 + x_1x_2 + 1$ <p>The magnitude of the maximum rate of change of the function at the point (1,1) is _____ (Round off to the nearest integer).</p>

END OF QUESTION PAPER